

KNOX, INDIANA

AL-6847 (FAA)

VOR/DME OXI <b>115.6</b> Chan <b>103</b>	APP CRS <b>157°</b>	Rwy Idg TDZE <b>685</b> Apt Elev <b>685</b>	<b>4401</b>
--	------------------------	---	-------------

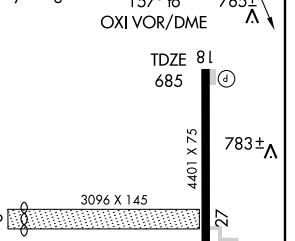
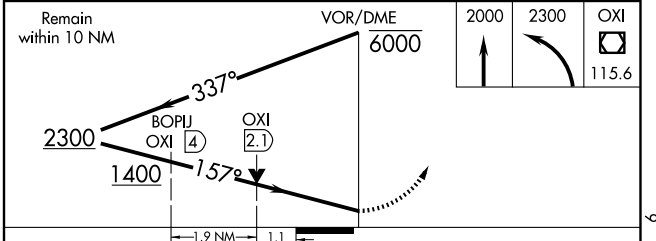
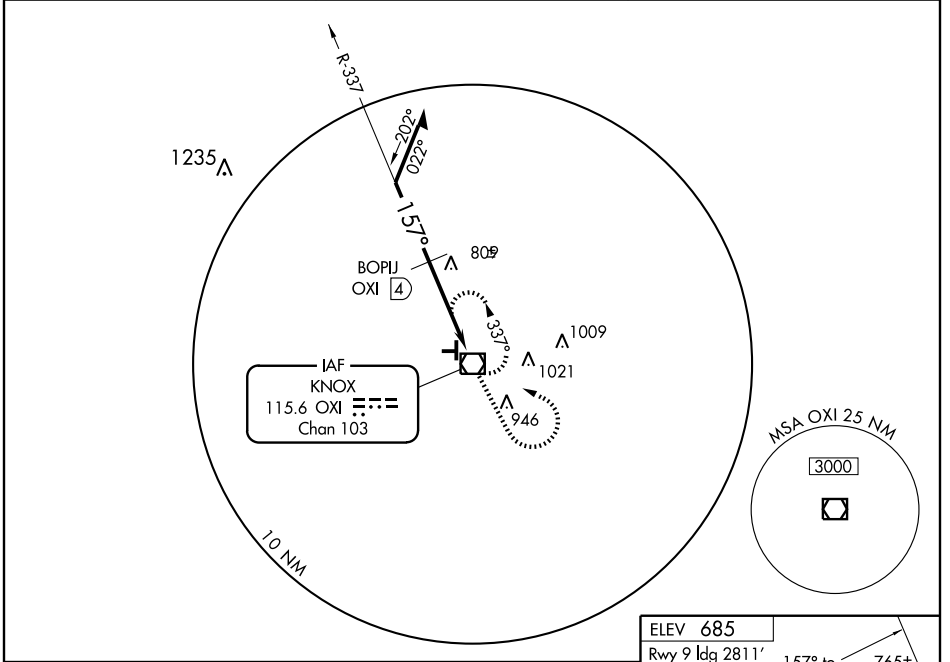
# VOR RWY 18

KNOX/STARKE COUNTY(OXI)

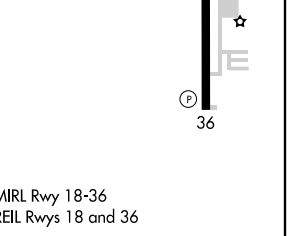
**⚠** Visibility reduction by helicopters NA. VDP NA when using South Bend altimeter setting. Obtain local altimeter setting on CTAF, when not received, use South Bend altimeter setting and increase all MDA 80 ft. Increase S-18 and circling Cat B, C, D visibilities ¼ mile. BOPIJ fix minimums when using South Bend altimeter setting, increase S-18 Cat C, D visibilities ¼ mile.

**MISSED APPROACH:** Climb to 2000, then climbing left turn to 2300 direct OXI VOR/DME and hold. Continue climb-in-hold to 2300.

AWOS-3 <b>135.775</b>	SOUTH BEND APP CON * <b>132.05 257.8</b>	UNICOM <b>122.8</b> (CTAF)
--------------------------	---	-------------------------------



CATEGORY	A	B	C	D
S-18	1400-1	715 (800-1)	1400-2 715 (800-2)	1400-2¼ 715 (800-2¼)
CIRCLING	1400-1	715 (800-1)	1400-2 715 (800-2)	1400-2¼ 715 (800-2¼)
BOPIJ FIX MINIMUMS				
S-18	1060-1 375 (400-1)		1060-1¼ 375 (400-1¼)	
CIRCLING	1100-1 415 (500-1)	1140-1 455 (500-1)	1140-1½ 455 (500-1½)	1240-2 555 (600-2)



KNOX, INDIANA  
Amdt 2 08269

41°20'N - 86°40'W

# KNOX/STARKE COUNTY(OXI) VOR RWY 18

EC-2, 22 OCT 2009 to 19 NOV 2009

EC-2, 22 OCT 2009 to 19 NOV 2009