

KNOX, INDIANA

AL-6847 (FAA)

# RNAV (GPS) RWY 18

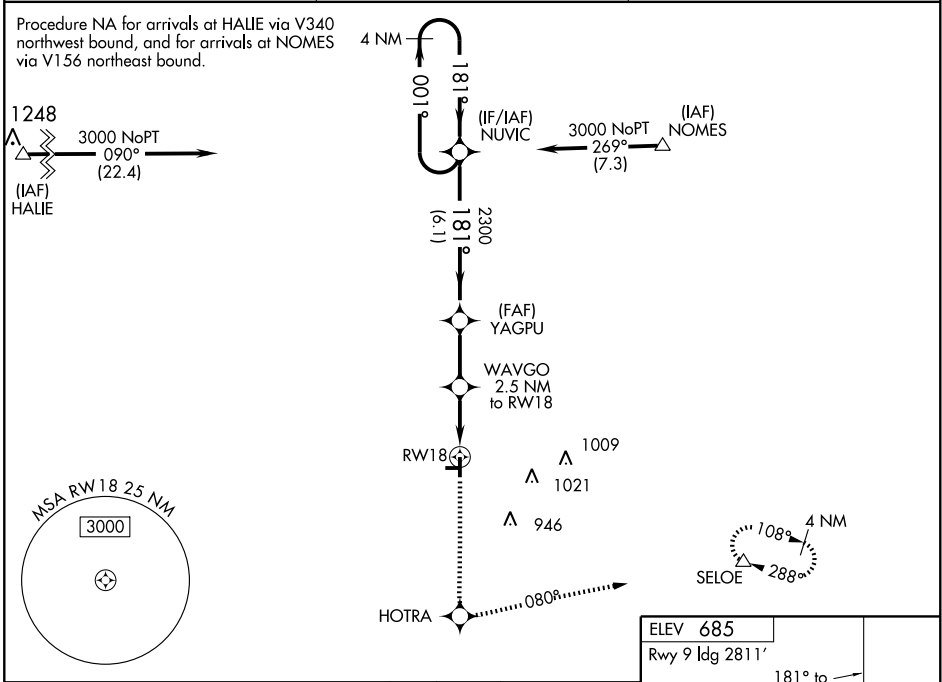
KNOX/STARKE COUNTY(OXI)

WAAS CH <b>87108</b> <b>W18A</b>	APP CRS <b>181°</b>	Rwy Idg TDZE Apt Elev	<b>4401</b> <b>685</b> <b>685</b>
--	------------------------	-----------------------------	---

▼ DME/DME RNP-0.3 NA. Visibility reduction by helicopters NA. For uncompensated Baro-VNAV systems, LNAV/VNAV NA below -16°C (4°F) or above 47°C (116°F). Baro-VNAV and VDP NA when using South Bend Rgnl altimeter setting. Obtain local altimeter setting on CTAF, when not received use South Bend Rgnl altimeter setting and increase all MDA/DA 80 feet, increase LPV and LNAV/VNAV visibilities ¼ mile all Cats, increase LNAV Cat C, D visibilities ¼ mile.

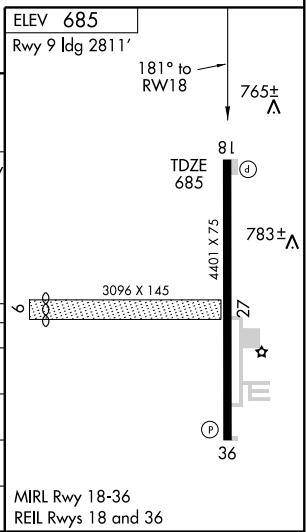
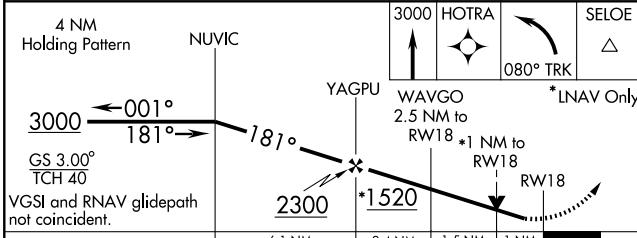
MISSED APPROACH:  
Climb to 3000 direct HOTRA and left turn via 080° track to SELOE and hold.

AWOS-3 <b>135.775</b>	SOUTH BEND APP CON* <b>132.05 257.8</b>	UNICOM <b>122.8</b> (CTAF)
--------------------------	--	-------------------------------



EC-2, 22 OCT 2009 to 19 NOV 2009

EC-2, 22 OCT 2009 to 19 NOV 2009



CATEGORY	A	B	C	D
LPV DA	935-1		250 (300-1)	
LNAV/ VNAV DA	1035-1¼		350 (400-1¼)	
LNAV MDA	1040-1		355 (400-1)	
			1040-1¼ 355 (400-1¼)	
CIRCLING	1100-1 415 (500-1)	1140-1 455 (500-1)	1140-1½ 455 (500-1½)	1240-2 555 (500-2)

KNOX, INDIANA  
Orig 08269

41°20'N - 86°40'W

# RNAV (GPS) RWY 18