

LCK TACAN Chan 69	APCH CRS 056°	Rwy ldg 12,102' TDZE 736' Arpt Elev 744'
-----------------------------	-------------------------	---

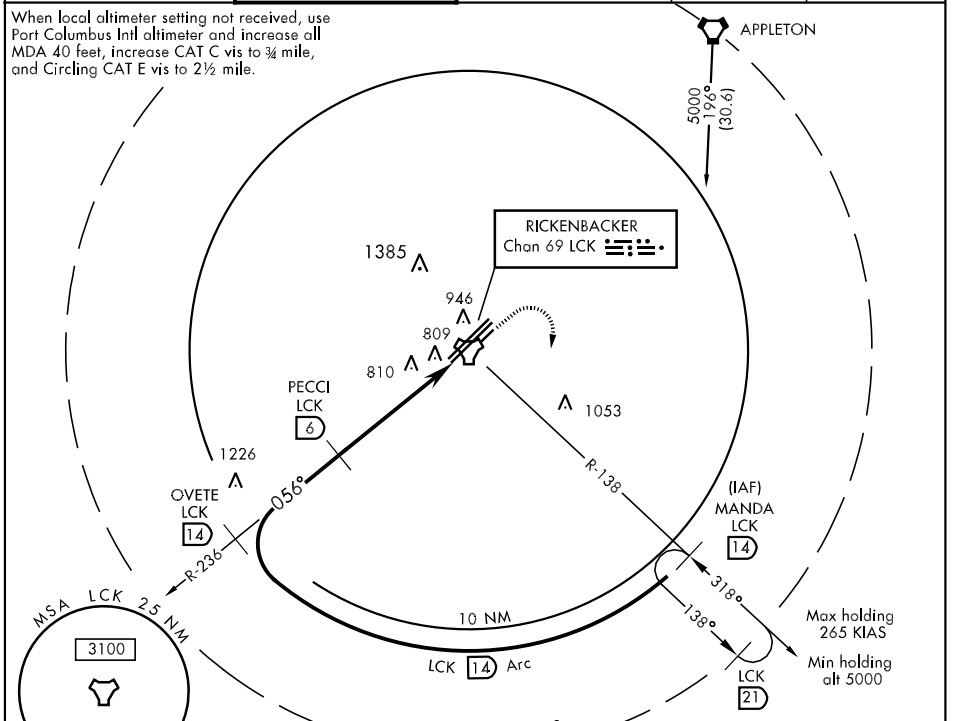
AL-6846 [USAF] COLUMBUS/ RICKENBACKER INTL (KLCK)

▼**When ALS inop, increase CAT A/B RVR to 5000, CAT C RVR to 6000, CAT D vis to 1½ mile and CAT E vis to 1¾ mile.
 **Circling not authorized NW of Rwy 5L-23R.

 ALSF-2

 MISSED APPROACH: Climb to 3000 then climbing right turn to 5000 via hdg 190° and via LCK R-138 to MANDA/ LCK 14.0 DME and hold, continue climb-in-hold to 5000.

COLUMBUS APP CON 119.15 279.6	RICK TOWER 120.05 348.4	GND CON 121.85 275.8	AWOS-3 132.75	UNICOM 122.95
---	-----------------------------------	--------------------------------	-------------------------	-------------------------

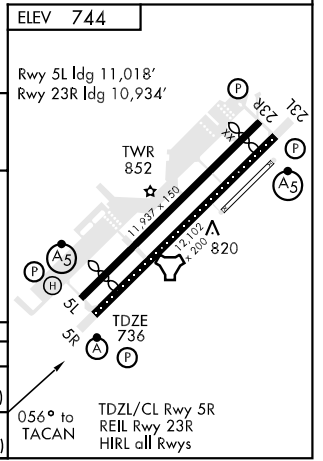
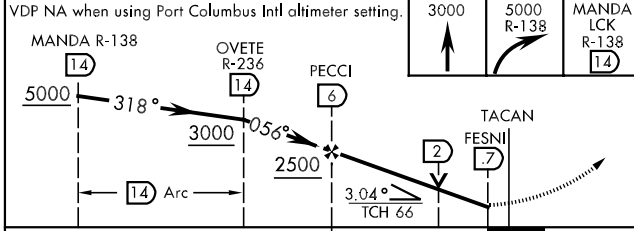


EC-2, 22 OCT 2009 to 19 NOV 2009

EC-2, 22 OCT 2009 to 19 NOV 2009

ELEV 744

EMERG SAFE ALT 100 NM 3600



CATEGORY	A	B	C	D	E
S-5R*	1200/24 464 (500-½)		1200/40 464 (500-¾)	1200/50 464 (500-1)	1200/60 464 (500-1¼)
CIRCLING**	1200-1	456 (500-1)	1200-1½ 456 (500-1½)	1300-2 556 (600-2)	1380-2¼ 636 (700-2¼)