

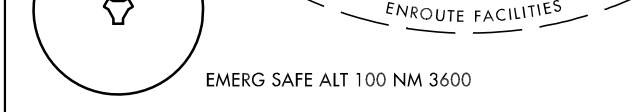
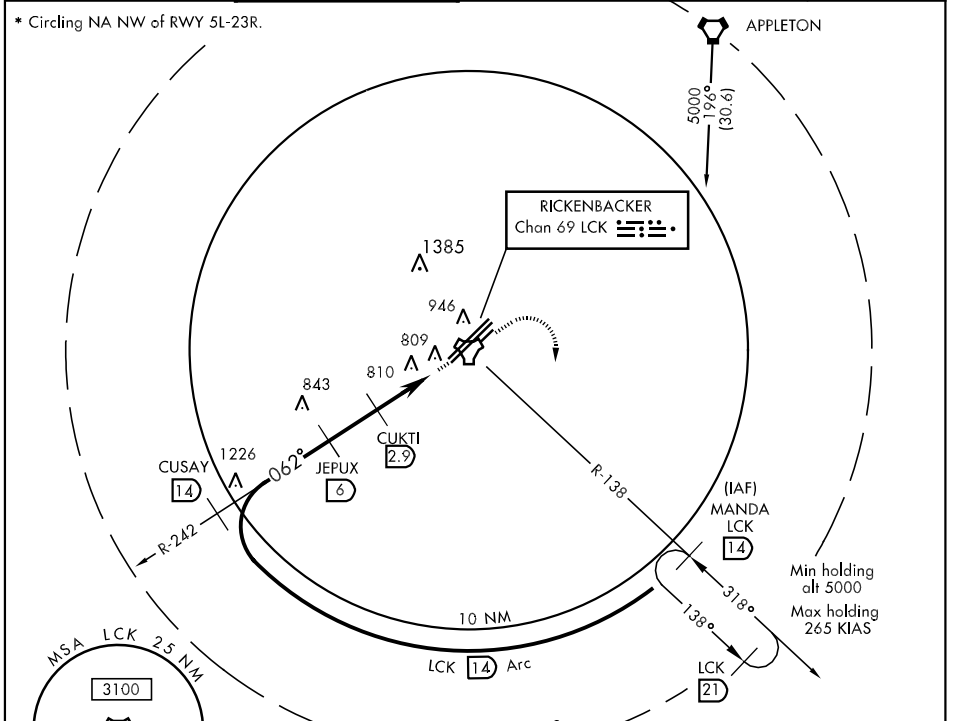
LCK TACAN Chan 69	APCH CRS 062°	Rwy Ldg 11,018' TDZE 744 Arpt Elev 744	AL-6846 [USAF]	COLUMBUS/ RICKENBACKER INTL (KLCK)
-----------------------------	-------------------------	---	----------------	------------------------------------

When local altimeter setting not received, use Port Columbus Intl altimeter setting, and increase all MDA 40 ft, increase CAT E vis to 1½ miles, and Circling CAT E vis to 2½ miles.

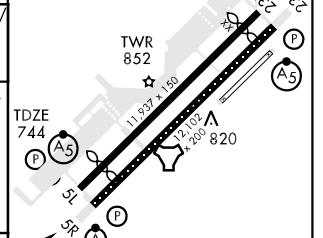
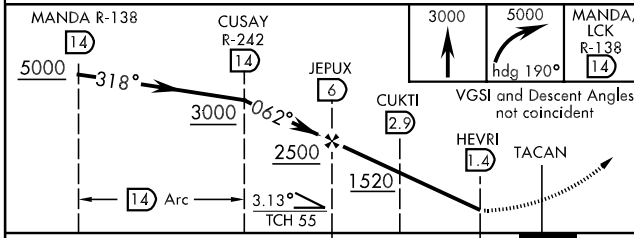


MISSED APPROACH: Climb to 3000 then climbing right turn to 5000 via heading 190° and via LCK TACAN R-138 to MANDA/LCK 14.0 DME and hold.

COLUMBUS APP CON 119.15 279.6	RICK TOWER 120.05 348.4	GND CON 121.85 275.8	AWOS-3 132.75	UNICOM 122.95
---	-----------------------------------	--------------------------------	-------------------------	-------------------------



ELEV 744
Rwy 5L Ldg 11,018'
Rwy 23R Ldg 10,934'



CATEGORY	A	B	C	D	E
S-5L	1100-1	356 (400-1)		1100-1¼	356 (400-1¼)
CIRCLING *	1180-1 436 (500-1)	1200-1 456 (500-1)	1200-1½ 456 (500-1½)	1300-2 556 (600-2)	1380-2¼ 636 (700-2¼)

062° to TACAN
TDZL/CL Rwy 5R
REIL Rwy 23R
HIRL all Rwys

EC-2, 22 OCT 2009 to 19 NOV 2009

EC-2, 22 OCT 2009 to 19 NOV 2009