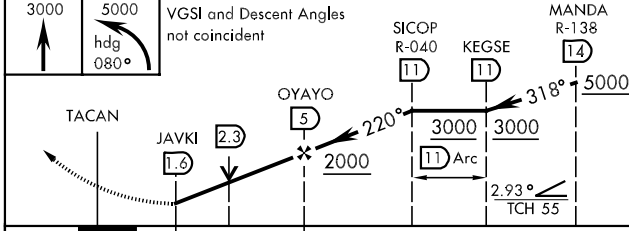
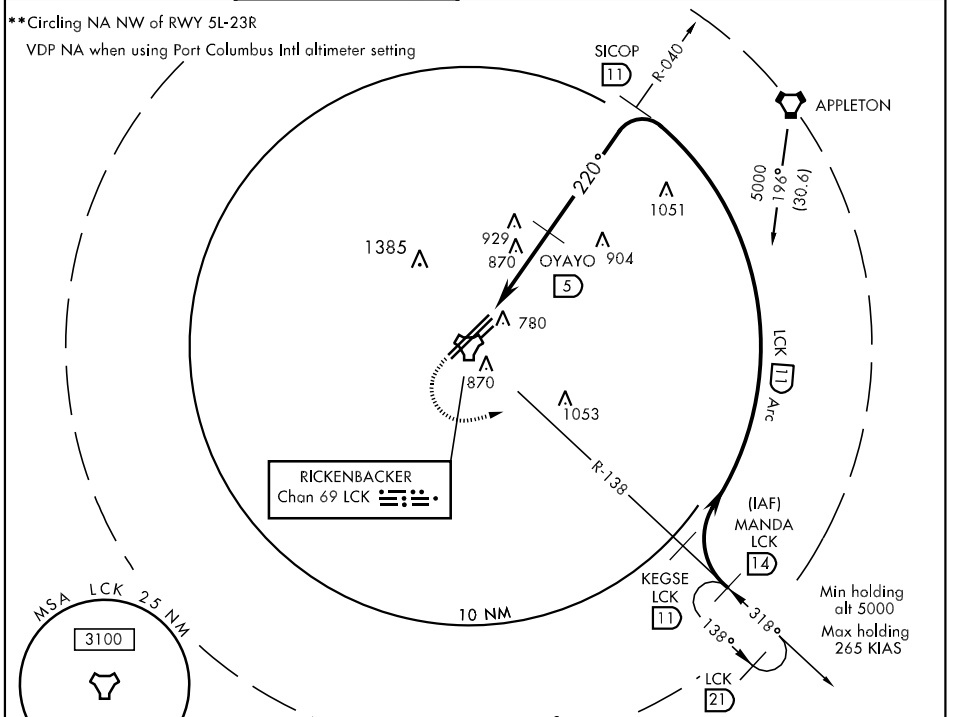


LCK TACAN Chan 69	APCH CRS 220°	Rwy ldg 10,934 TDZE 743 Arpt Elev 744	AL-6846 [USAF]	COLUMBUS/ RICKENBACKER INTL (KLCK)
-----------------------------	-------------------------	--	----------------	------------------------------------

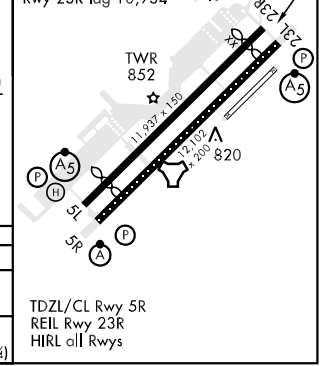
* When local altimeter setting not received, use Port Columbus Intl altimeter setting and increase all MDA 40 feet, increase CAT E vis to 1 $\frac{3}{4}$ mile.

MISSED APPROACH: Climb to 3000 then climbing left turn to 5000 via heading 080° and via LCK TACAN R-138 to MANDA/LCK 14.0 DME and hold.

COLUMBUS APP CON 119.15 279.6	RICK TOWER 120.05 348.4	GND CON 121.85 275.8	AWOS-3 132.75	UNICOM 122.95
---	-----------------------------------	--------------------------------	-------------------------	-------------------------



CATEGORY	A	B	C	D	E
S-23R *	1180-1	437 (500-1)	1180-1 $\frac{1}{4}$ 437 (500-1 $\frac{1}{4}$)	1180-1 $\frac{1}{2}$	437 (500-1 $\frac{1}{2}$)
CIRCLING **	1180-1 436 (500-1)	1200-1 456 (500-1)	1200-1 $\frac{1}{2}$ 456 (500-1 $\frac{1}{2}$)	1300-2 556 (600-2)	1380-2 $\frac{1}{4}$ 636 (700-2 $\frac{1}{4}$)



EC-2, 22 OCT 2009 to 19 NOV 2009

EC-2, 22 OCT 2009 to 19 NOV 2009