

LCK TACAN Chan 69	APCH CRS 226°	Rwy ldg 12,102' TDZE 740 Arpt Elev 744
-----------------------------	-------------------------	---

AL-6846 [USAF]

COLUMBUS/ RICKENBACKER INTL (KLCK)

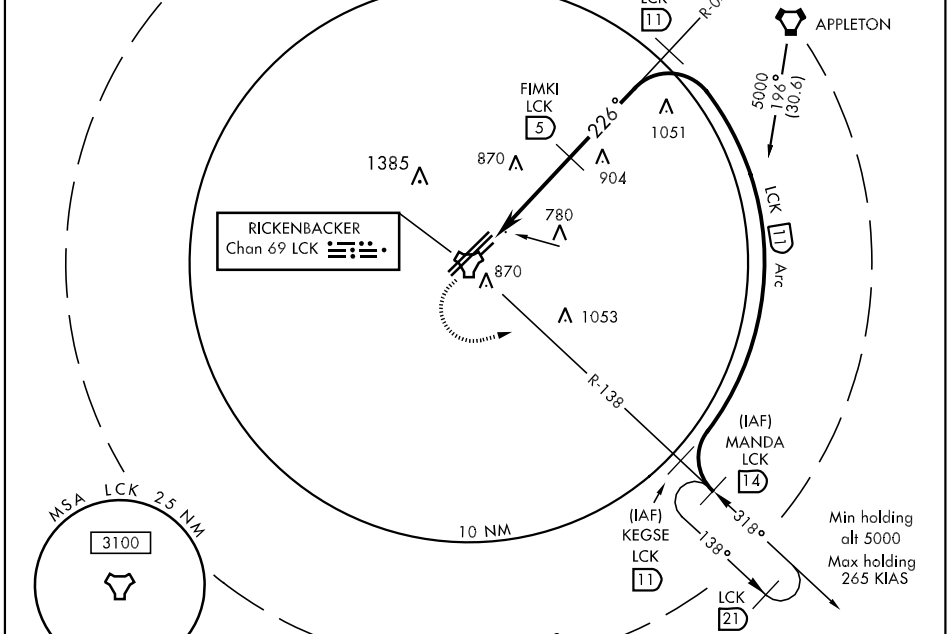
* When ALS inop, increase CAT A/B RVR to 5000, CAT C RVR to 6000, CAT D vis to 1½ miles, CAT E vis to 1¾ miles.
 ** Circling NA NW of Rwy 5L-23R.



MISSED APPROACH: Climb to 3000 then climbing left turn to 5000 via heading 080° and via LCK TACAN R-138 to MANDA/LCK 14.0 DME and hold.

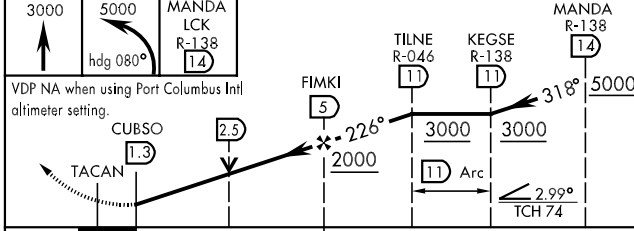
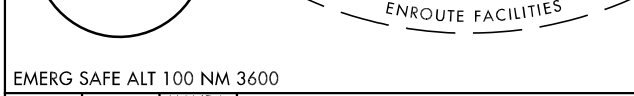
COLUMBUS APP CON 119.15 279.6	RICK TOWER 120.05 348.4	GND CON 121.85 275.8	AWOS-3 132.75	UNICOM 122.95
---	-----------------------------------	--------------------------------	-------------------------	-------------------------

When local altimeter setting not received, use Port Columbus Intl altimeter and increase all MDA 40 feet, increase S-23L CAT C RVR to 5000, CAT D RVR to 6000, and Circling CAT E vis to 2½ miles.



EC-2, 22 OCT 2009 to 19 NOV 2009

EC-2, 22 OCT 2009 to 19 NOV 2009



CATEGORY	A	B	C	D	E
S-23L *	1220/24 481 (500-½)		1220/40 481 (500-¾)	1220/50 481 (500-1)	1220/60 481 (500-1½)
CIRCLING **	1220-1 476 (500-1)		1220-1½ 476 (500-1½)	1300-2 556 (600-2)	1380-2½ 636 (700-2½)

