

WAAS CH 78410 W05A	APP CRS 050°	Rwy Idg 12102 TDZE 736 Apt Elev 744
---------------------------------	------------------------	--

RNAV (GPS) RWY 5R

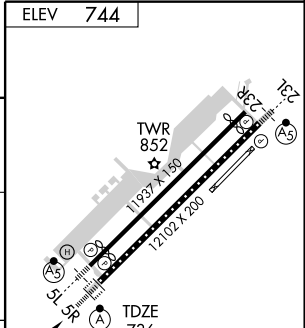
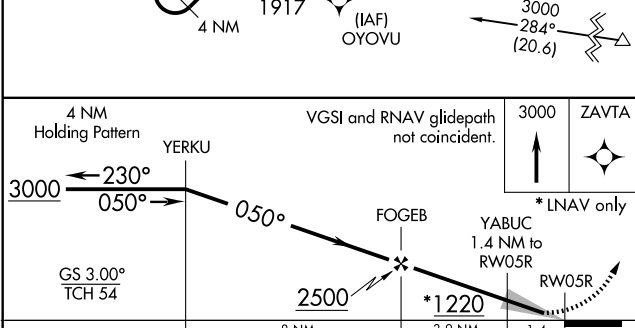
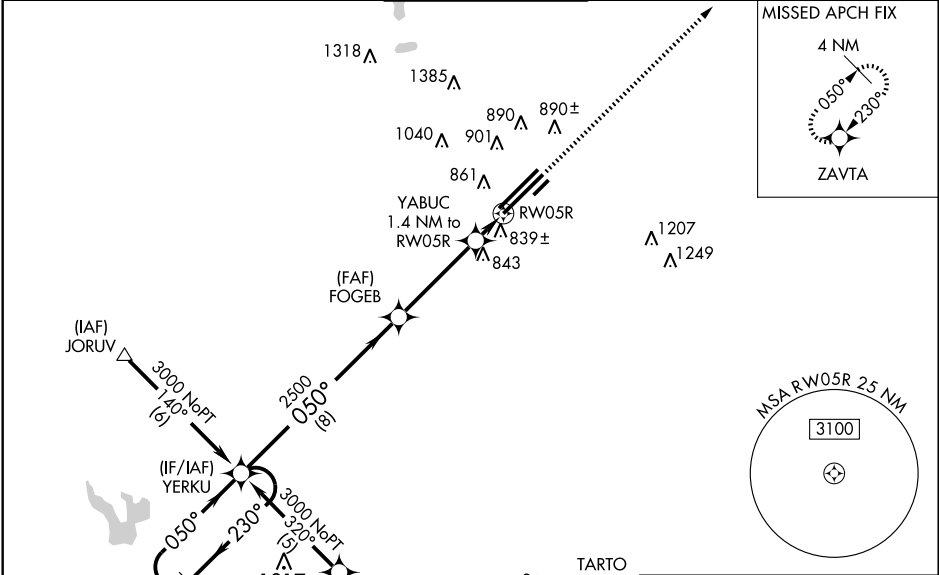
COLUMBUS / RICKENBACKER INTL (LCK)

⚠ For inoperative ALSF, increase LNAV Cat D visibility to RVR 6000. Circling NA NW of Rwy 5L-23R. Baro-VNAV NA when using Port Columbus Intl altimeter setting. For uncompensated Baro-VNAV systems, LNAV/VNAV NA below -1.6°C (4°F) or above 47°C (116°F). DME/DME RNP-0.3 NA. When local altimeter setting not received, use Port Columbus Intl altimeter setting and increase all DA 36 feet, increase all MDA 40 feet and LNAV Cat C visibility to RVR 4000.

ALSF2

MISSED APPROACH:
Climb to 3000 direct ZAVTA and hold.

AWOS-3 132.75	COLUMBUS APP CON 119.15 279.6	RICK TOWER 120.05 348.4	GND CON 121.85 275.8	UNICOM 122.95
-------------------------	---	--	--------------------------------	-------------------------



CATEGORY	A	B	C	D
LPV DA		936/24	200 (200-1/2)	
LNAV/VNAV DA		1138/50	402 (400-1)	
LNAV MDA	1120/24	384 (400-1/2)		1120/50 384 (400-1)
CIRCLING	1180-1 436 (500-1)	1200-1 456 (500-1)	1200-1 1/2 456 (500-1 1/2)	1300-2 556 (600-2)

TDZ/CL Rwy 5R
REIL Rwy 23R
HIRL Rwys 5L-23R and 5R-23L

EC-2, 22 OCT 2009 to 19 NOV 2009

EC-2, 22 OCT 2009 to 19 NOV 2009