

NDB RWY 5R

COLUMBUS / RICKENBACKER INTL (LCK)

LOM DD 253	APP CRS 051°	Rwy Idg 12102
		TDZE 736
		Apt Elev 744

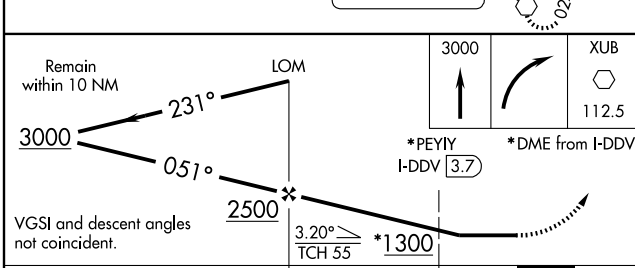
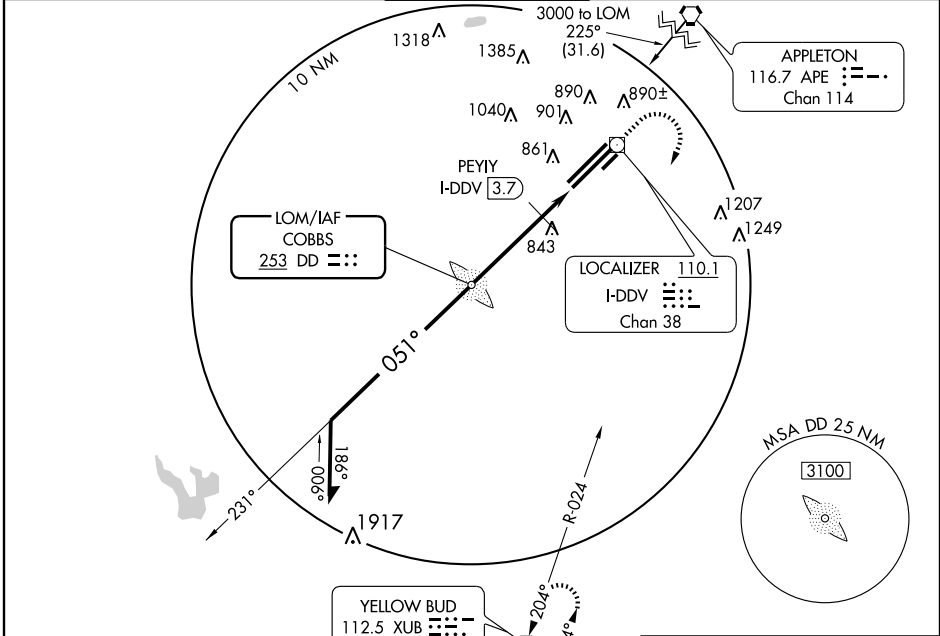
⚠ Circling NA NW of Rwy 5L-23R. When local altimeter setting not received, use Port Columbus Intl altimeter setting and increase all MDA 40 feet, increase S-5R Cat C visibility to RVR 6000, Cat D visibility to 1 1/4 mile and PEYIY fix minimums Cat D visibility to RVR 6000.

ALSF2

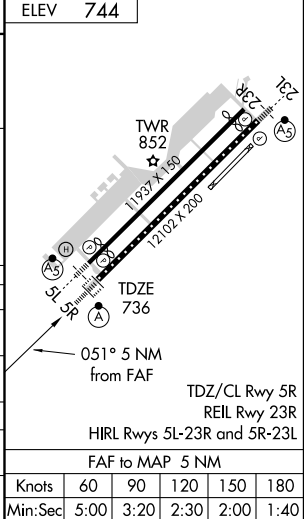


MISSED APPROACH:
Climb to 3000 then right turn direct XUB VOR and hold.

AWOS-3 132.75	COLUMBUS APP CON 119.15 279.6	RICK TOWER 120.05 348.4	GND CON 121.85 275.8	UNICOM 122.95
-------------------------	---	-----------------------------------	--------------------------------	-------------------------



CATEGORY	A	B	C	D
S-5R	1300/40 564 (600-3/4)		1300/50 564 (600-1)	1300-1 1/2 564 (600-1 1/2)
CIRCLING	1300-1 556 (600-1)		1300-1 1/2 556 (600-1 1/2)	1300-2 556 (600-2)
*PEYIY FIX MINIMUMS				
S-5R	1160/40 424 (500-3/4)		1160/50 424 (500-1)	
CIRCLING	1180-1 436 (500-1)	1200-1 456 (500-1)	1200-1 1/2 456 (500-1 1/2)	1300-2 556 (600-2)



NDB RWY 5R

EC-2, 22 OCT 2009 to 19 NOV 2009

EC-2, 22 OCT 2009 to 19 NOV 2009