

LOC I-LCK <b>110.1</b>	APP CRS <b>230°</b>	Rwy Idg	23L	23R
		TDZE	<b>12102</b>	<b>10934</b>
			<b>739</b>	<b>743</b>
		Apt Elev	<b>744</b>	<b>744</b>

# ILS or LOC RWY 23L

COLUMBUS / RICKENBACKER INTL (LCK)

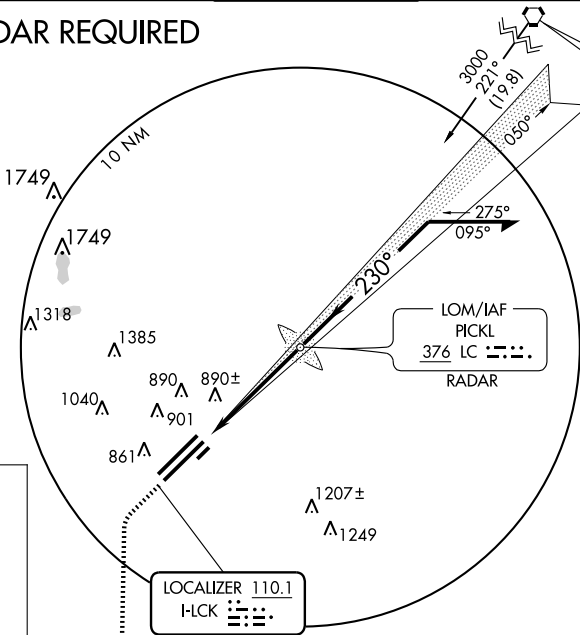
**⚠** When local altimeter setting not received, use Port Columbus Intl altimeter setting and increase all DA to 975 feet and all MDA 40 feet. Circling not authorized NW of Rwy 5L-23R.



**MISSED APPROACH:** Climb to 3000, then left turn direct XUB VOR and hold.

AWOS-3 <b>132.75</b>	COLUMBUS APP CON <b>119.15 279.6</b>	RICK TOWER <b>120.05 348.4</b>	GND CON <b>121.85 275.8</b>	UNICOM <b>122.95</b>
-------------------------	---	-----------------------------------	--------------------------------	-------------------------

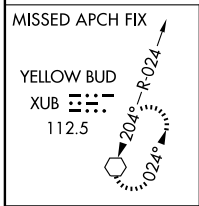
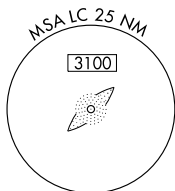
## ADF or RADAR REQUIRED



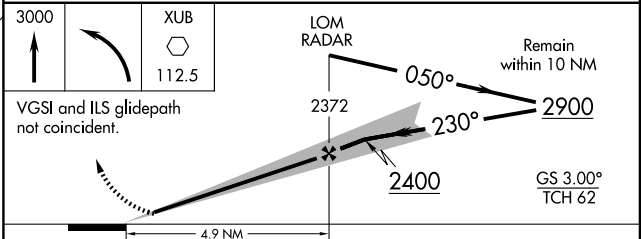
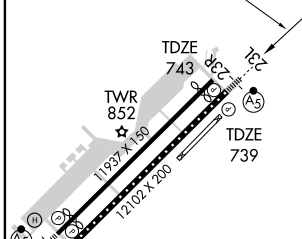
APPLETON  
116.7 APE  
Chan 114

LOM/IAF  
PICKL  
376 LC

LOCALIZER 110.1  
I-LCK



ELEV	<b>744</b>
------	------------



CATEGORY	A	B	C	D
S-ILS 23L	939/24 200 (200-½)			
S-LOC 23L	1180/24	441 (500-½)	1180/40 441 (500-¾)	1180/50 441 (500-1)
SIDESTEP RWY 23R	1220-1	477 (500-1)	1220-1½ 477 (500-1½)	1220-2 477 (500-2)
CIRCLING	1180-1 436 (500-1)	1200-1 456 (500-1)	1200-1½ 456 (500-1½)	1300-2 556 (600-2)

FAF to MAP 4.9 NM					
Knots	60	90	120	150	180
Min:Sec	4:54	3:16	2:27	1:58	1:38

EC-2, 22 OCT 2009 to 19 NOV 2009

EC-2, 22 OCT 2009 to 19 NOV 2009