

COLUMBUS, OHIO

AL-6846 (FAA)

LOC/DME I-DDV <b>110.1</b> Chan <b>38</b>	APP CRS <b>050°</b>	Rwy Idg <b>12102</b> TDZE <b>736</b> Apt Elev <b>744</b>
---	------------------------	--

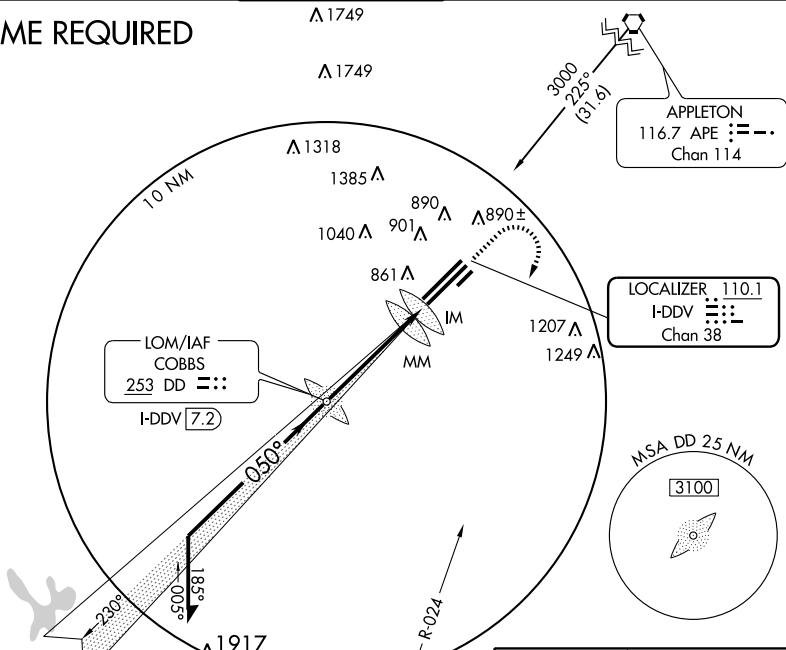
# ILS RWY 5R (CAT II)

COLUMBUS / RICKENBACKER INTL (LCK)

<p><b>⚠</b> Cat II NA when using Port Columbus altimeter setting.</p>	<p>ALS F2</p>	<p>MISSED APPROACH: Climb to 3000, then turn right direct XUB VOR and hold.</p>
---	---------------	---

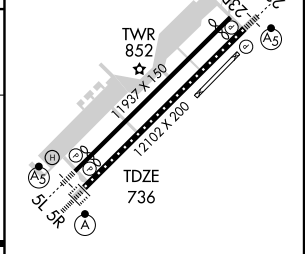
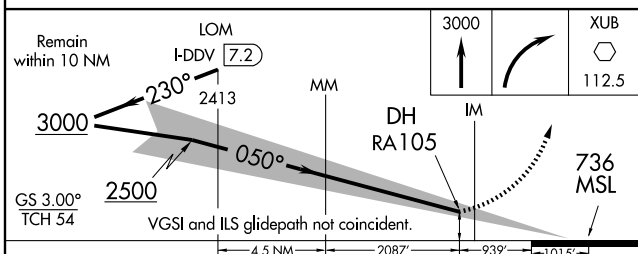
AWOS-3 <b>132.75</b>	COLUMBUS APP CON <b>119.15 279.6</b>	RICK TOWER <b>120.05 348.4</b>	GND CON <b>121.85 275.8</b>	UNICOM <b>122.95</b>
-------------------------	---	-----------------------------------	--------------------------------	-------------------------

### ADF or DME REQUIRED



EC-2, 22 OCT 2009 to 19 NOV 2009

EC-2, 22 OCT 2009 to 19 NOV 2009



CATEGORY	A	B	C	D
S-ILS 5R	839/12		103 RA 105	

**CATEGORY II ILS - SPECIAL AIRCREW & AIRCRAFT CERTIFICATION REQUIRED**

TDZ/CL Rwy 5R  
REIL Rwy 23R  
HIRL Rwys 5L-23R and 5R-23L

COLUMBUS, OHIO  
Amdt 2A 09295

39°49'N - 82°56'W

COLUMBUS / RICKENBACKER INTL (LCK)  
**ILS RWY 5R (CAT II)**