

TORRINGTON, WYOMING

AL-6845 (FAA)

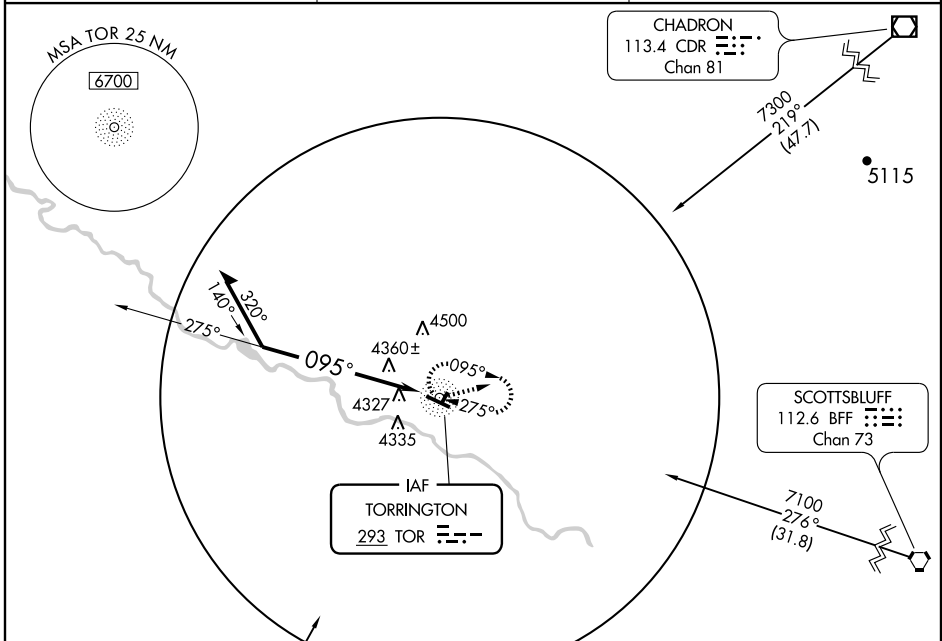
NDB RWY 10

TORRINGTON MUNI (TOR)

NDB TOR 293	APP CRS 095°	Rwy Idg TDZE Apt Elev	5703 4205 4205
-----------------------	------------------------	-----------------------------	---

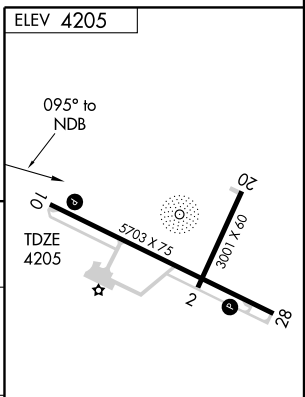
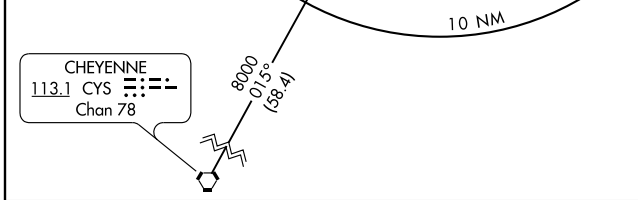
NA MISSED APPROACH: Climb to 6500 in TOR NDB holding pattern.

ASOS 118.375	DENVER CENTER 127.95 338.2	UNICOM 122.8 (CTAF) 1
------------------------	--------------------------------------	--



NW-1, 22 OCT 2009 to 19 NOV 2009

NW-1, 22 OCT 2009 to 19 NOV 2009



CATEGORY	A	B	C	D
S-10	4940-1 735 (800-1)		4940-2 735 (800-2)	4940-2 735 (800-2) 1/4
CIRCLING	4940-1 735 (800-1)		4940-2 735 (800-2)	4940-2 735 (800-2) 1/4

REIL Rwy 10-28 1	MIRL Rwy 10-28 1				
Knots	60	90	120	150	180
Min:Sec					

TORRINGTON, WYOMING
Amdt 1A 08213

42°04'N-104°09'W

TORRINGTON MUNI (TOR) NDB RWY 10