

TORRINGTON, WYOMING

AL-6845 (FAA)

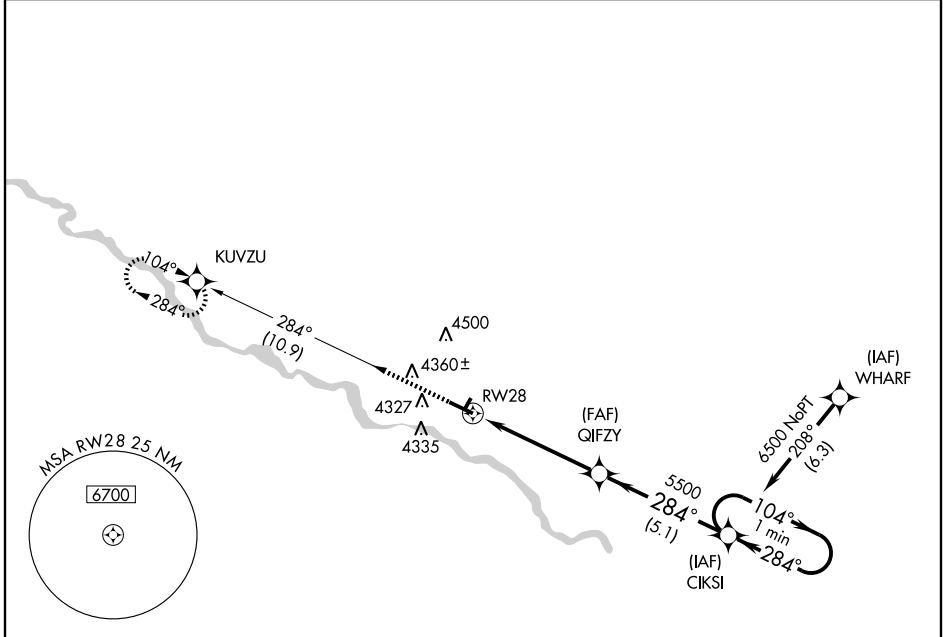
GPS RWY 28

TORRINGTON MUNI (TOR)

APP CRS 284°	Rwy Idg 5703
	TDZE 4200
	Apt Elev 4205

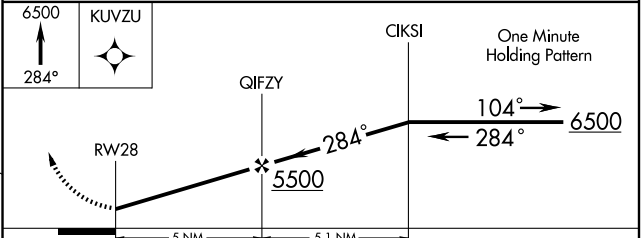
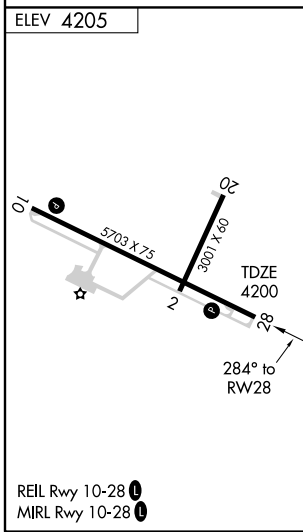
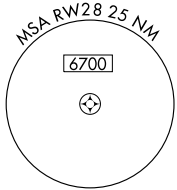
▲ NA MISSED APPROACH: Climb to 6500 via 284° course to KUVZU WP and hold.

ASOS 118.375	DENVER CENTER 127.95 338.2	UNICOM 122.8 (CTAF) 0
------------------------	--------------------------------------	---------------------------------



NW-1, 22 OCT 2009 to 19 NOV 2009

NW-1, 22 OCT 2009 to 19 NOV 2009



CATEGORY	A	B	C	D
S-28	4620-1	420 (500-1)	4620-1¼	420 (500-1¼)
CIRCLING	4680-1	475 (500-1)	4680-1½ 475 (500-1½)	4820-2 615 (700-2)

TORRINGTON, WYOMING
Orig-A 08213

42°04'N-104°09'W

GPS RWY 28

TORRINGTON MUNI (TOR)