

TORRINGTON, WYOMING

AL-6845 (FAA)

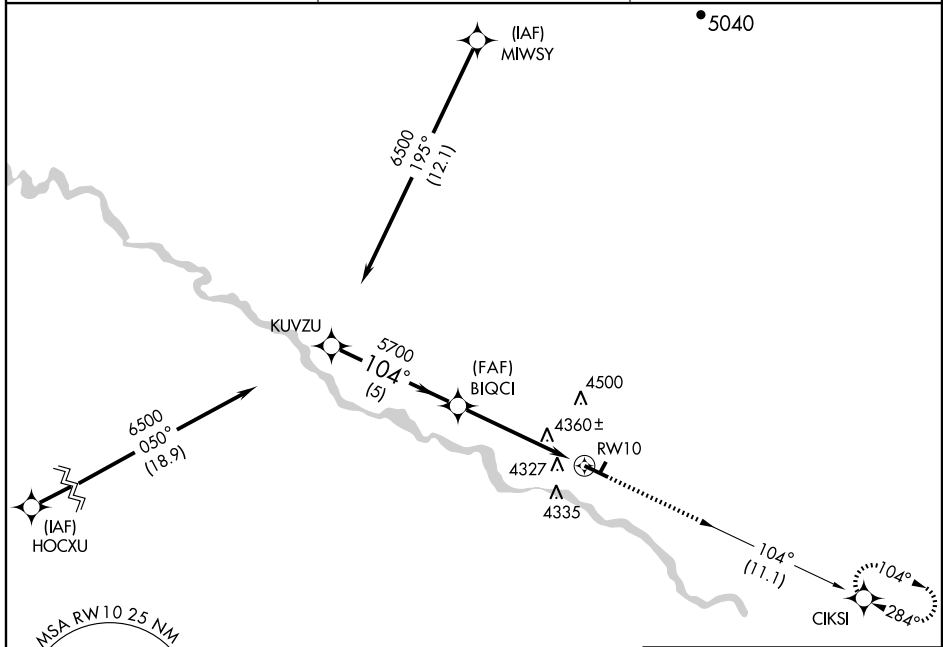
GPS RWY 10

TORRINGTON MUNI (TOR)

APP CRS	Rwy Idg	5703
104°	TDZE	4205
	Apt Elev	4205

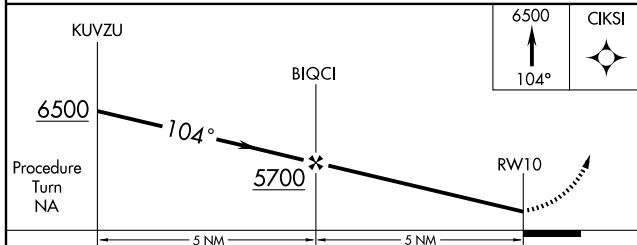
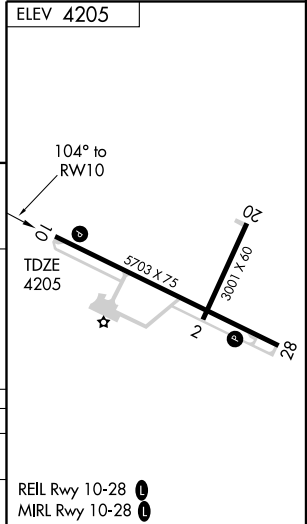
▲ NA MISSED APPROACH: Climb to 6500 via 104° course to CIKSI WP and hold.

ASOS 118.375	DENVER CENTER 127.95 338.2	UNICOM 122.8 (CTAF) ①
------------------------	--------------------------------------	--



NW-1, 22 OCT 2009 to 19 NOV 2009

NW-1, 22 OCT 2009 to 19 NOV 2009



CATEGORY	A	B	C	D
S-10	4660-1	455 (500-1)	4660-1¼ 455 (500-1¼)	4660-1½ 455 (600-1½)
CIRCLING	4680-1	475 (500-1)	4680-1½ 475 (500-1½)	4820-2 615 (700-2)

TORRINGTON, WYOMING
Orig-A 08213

42°04'N-104°09'W

TORRINGTON MUNI (TOR)
GPS RWY 10

REIL Rwy 10-28 **①**
MIRL Rwy 10-28 **①**