

MADISONVILLE, TEXAS

AL-6843 (FAA)

VORTAC LOA 110.8 Chan 45	APP CRS 168°	Rwy Idg TDZE Apt Elev	3202 287 287
--	------------------------	-----------------------------	---

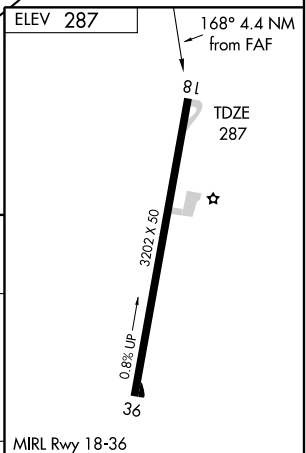
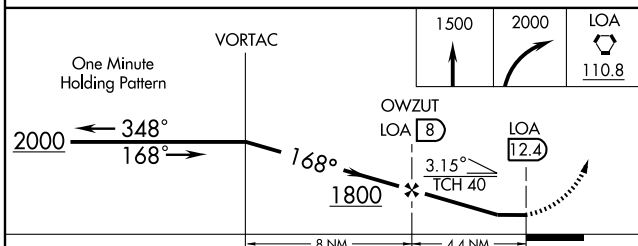
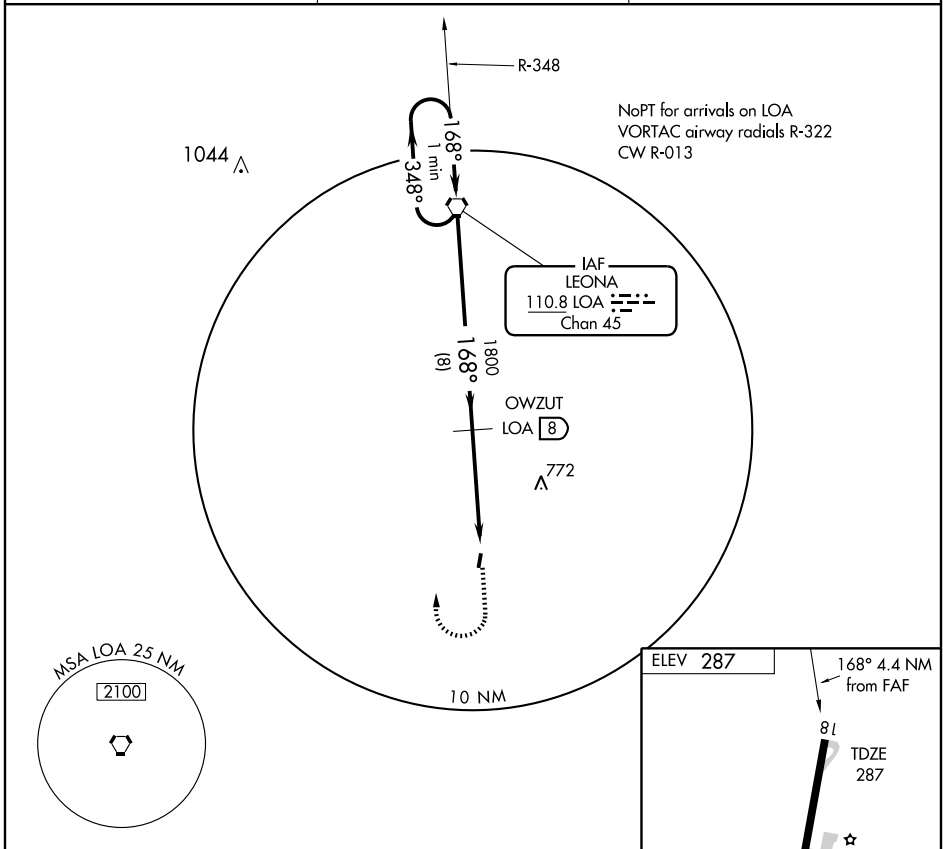
VOR/DME RWY 18

MADISONVILLE MUNI (51R)

Use Huntsville Muni altimeter setting. MISSED APPROACH: Climb to 1500, then climbing right turn to 2000 direct LOA VORTAC and hold.

▲ NA

HUNTSVILLE ASOS 119,425	HOUSTON CENTER 134.8 269.6	CTAF 122.9
-----------------------------------	--------------------------------------	----------------------



CATEGORY	A	B	C	D	Knots	60	90	120	150	180
S-18	760-1	473 (500-1)		NA	Min:Sec					
CIRCLING	780-1	493 (500-1)		NA						

MADISONVILLE, TEXAS
Amdt 2A 05132

30°55'N-95°57'W

MADISONVILLE MUNI (51R) VOR/DME RWY 18

SC-5, 22 OCT 2009 to 19 NOV 2009

SC-5, 22 OCT 2009 to 19 NOV 2009