

WAAS CH 93799 W23A	APP CRS 232°	Rwy Idg TDZE 188 Apt Elev 188	5000
--	------------------------	---	-------------

RNAV (GPS) RWY 23

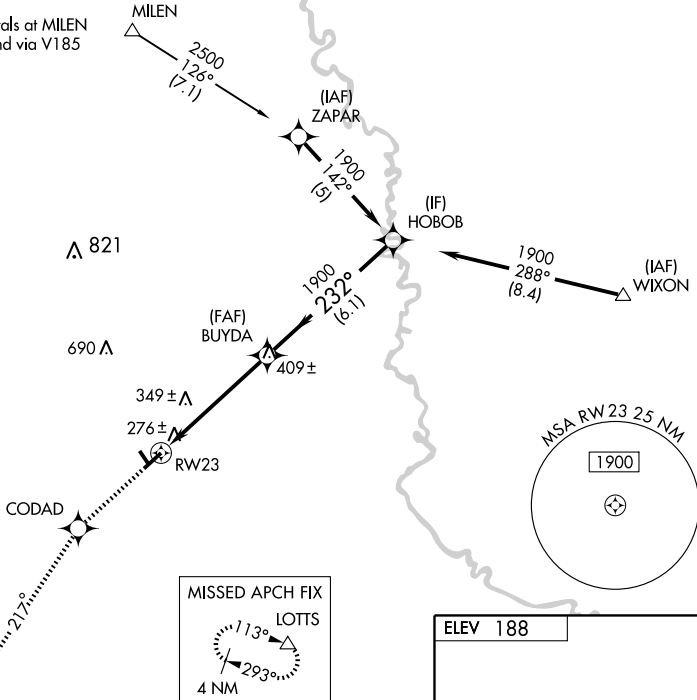
SYLVANIA/ PLANTATION AIRPARK (JYL)

- ▼ For uncompensated Baro-VNAV systems, LNAV/VNAV NA below -15°C (5°F) or above 48°C (118°F). DME/DME RNP-0.3 NA. Visibility reduction by helicopters NA.
- ▲ If local altimeter setting not received, use Savannah altimeter setting and increase LPV DA to 620 feet; LNAV/VNAV DA to 664 feet; increase all MDAs 120 feet.

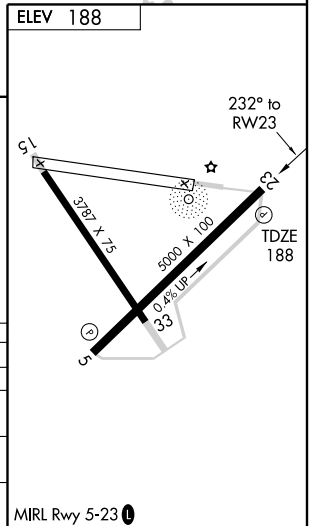
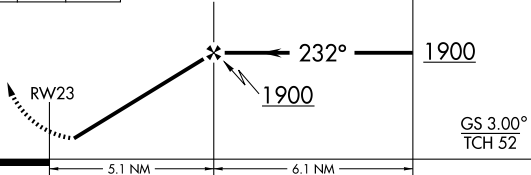
MISSED APPROACH: Climb to 3000 direct CODAD and via 217° track to LOTS and hold.

AWOS-3 118.875	JACKSONVILLE CENTER 132.5 363.2	UNICOM 122.8 (CTAF) ☉
--------------------------	---	---------------------------------

Procedure NA for arrivals at MILEN via V70 Westbound and via V185 Northbound.



3000	CODAD	TRK 217°	LOTS	VGSI and RNAV glidepath not coincident.	Procedure Turn NA
				BUYDA	HOBOB



CATEGORY	A	B	C	D
LPV DA	515-1 327 (400-1)			
LNAV/VNAV DA	559-1¼ 371 (400-1¼)			
LNAV MDA	600-1	412 (500-1)	600-1¼	412 (500-1¼)
CIRCLING	640-1	452 (500-1)	640-1½	740-2 552 (600-2)

SE-4, 22 OCT 2009 to 19 NOV 2009

SE-4, 22 OCT 2009 to 19 NOV 2009