

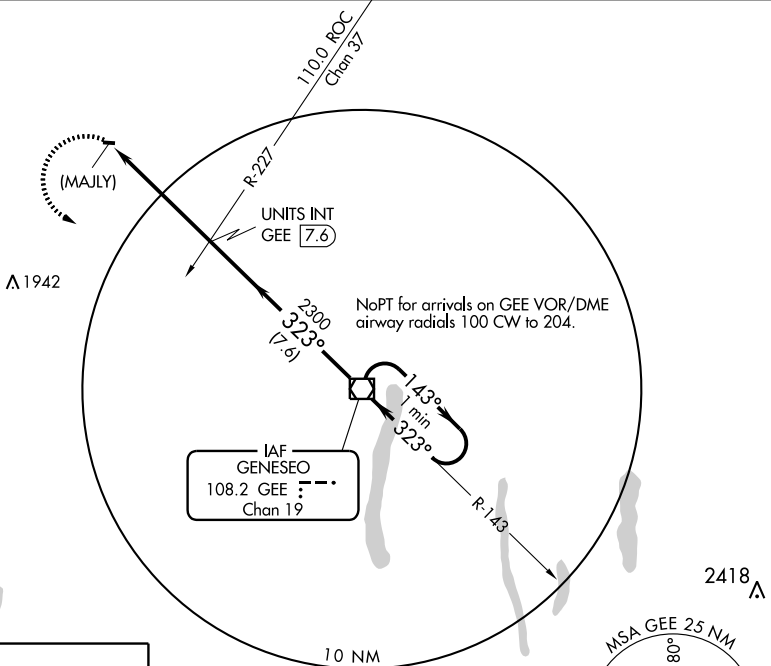
# VOR or GPS-A

LE ROY (5G $\emptyset$ )

VOR/DME GEE <b>108.2</b> Chan <b>19</b>	APP CRS <b>323°</b>	Rwy Idg TDZE Apt Elev	<b>N/A</b> <b>N/A</b> <b>785</b>
---	------------------------	-----------------------------	--

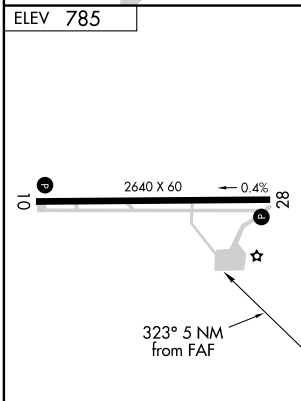
<b>⚠</b> NA Use Rochester altimeter setting; when not available, procedure not authorized.	MISSED APPROACH: Climbing left turn to 4000 direct GEE VOR/DME and hold.
---	--

ROCHESTER APP CON <b>123.7 323.3</b>	UNICOM <b>122.8 (CTAF)</b> <b>U</b>
---	--

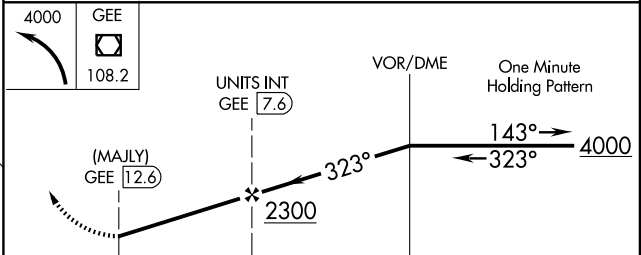


NE-2, 22 OCT 2009 to 19 NOV 2009

NE-2, 22 OCT 2009 to 19 NOV 2009



FAF to MAP 5 NM					
Knots	60	90	120	150	180
Min:Sec	5:00	3:20	2:30	2:00	1:40



CATEGORY	A	B	C	D
CIRCLING	1400-1 615 (700-1)		NA	