

# VOR/DME or GPS RWY 20

MACON-FOWER MEMORIAL (K89)

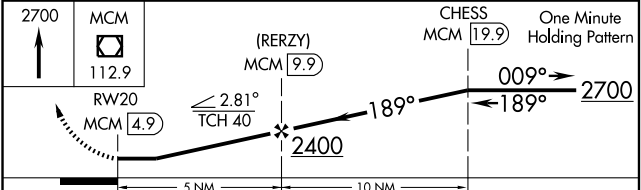
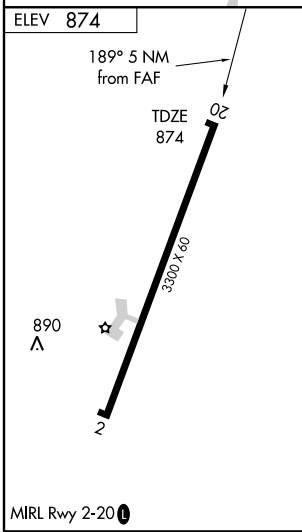
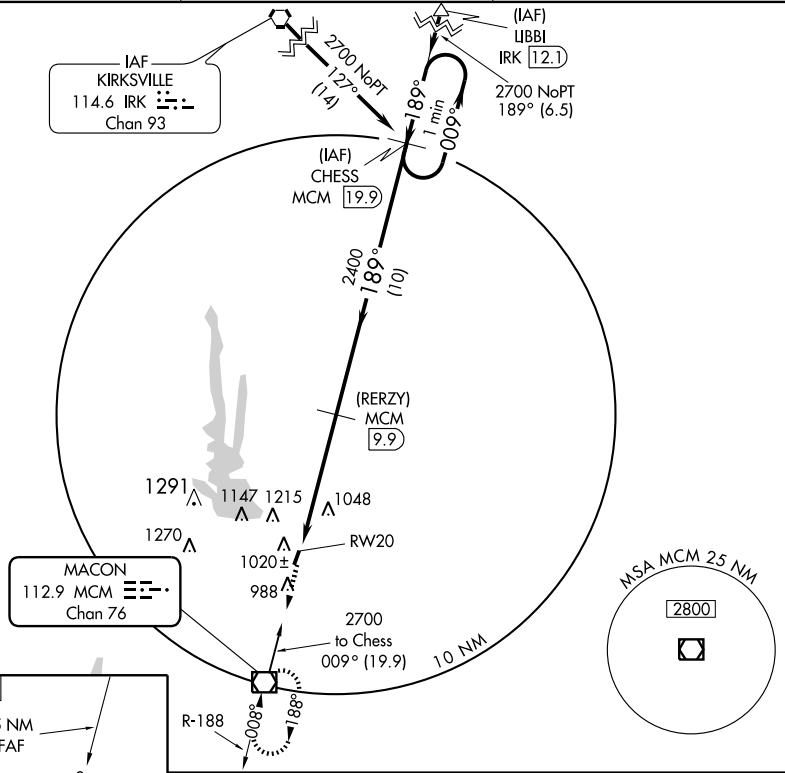
VOR/DME MCM <b>112.9</b> Chan 76	APP CRS <b>189°</b>	Rwy Idg <b>3300</b> TDZE <b>874</b> Apt Elev <b>874</b>
--	------------------------	---

**NA** Obtain Moberly altimeter setting CTAF (122.7); when not received use Columbia altimeter setting. MISSED APPROACH: Climb to 2700 direct to MCM VOR/DME and hold.

KANSAS CITY CENTER <b>125.25 381.5</b>	MOBERLY CTAF <b>122.7</b>	UNICOM <b>122.8 (CTAF) 0</b>
---	------------------------------	---------------------------------

NC-3, 22 OCT 2009 to 19 NOV 2009

NC-3, 22 OCT 2009 to 19 NOV 2009



CATEGORY	A	B	C	D
S-20	1560-1	686 (700-1)	1560-2 686 (700-2)	NA
CIRCLING	1560-1 686 (700-1)	1620-1½ 786 (800-1½)	1620-2½ 746 (800-2½)	NA
COLUMBIA ALTIMETER SETTING MINIMUMS				
S-20	1660-1 786 (800-1)	1660-1½ 786 (800-1½)	1660-2½ 786 (800-2½)	NA
CIRCLING	1660-1 786 (800-1)	1700-1½ 826 (900-1½)	1700-2½ 826 (900-2½)	NA