

# GPS RWY 2

MACON-FOWER MEMORIAL (K89)

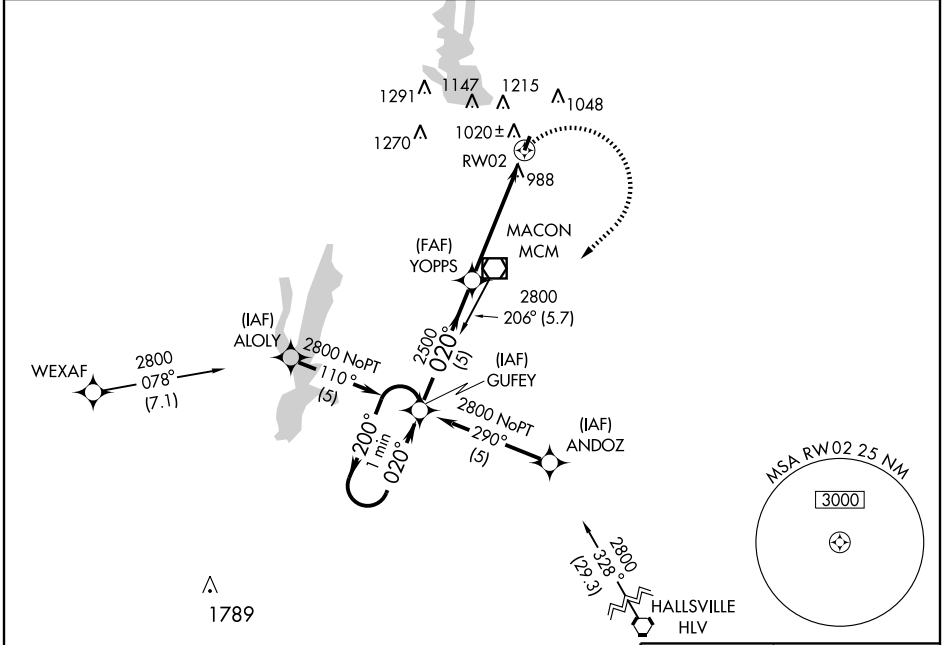
APP CRS	Rwy Idg	<b>3300</b>
<b>020°</b>	TDZE	<b>874</b>
	Apt Elev	<b>874</b>

Obtain Moberly altimeter setting on CTAF (122.7); when not received use Columbia altimeter setting.

**▲** NA

MISSED APPROACH: Climbing right turn to 2800 direct GUFEY WP and hold.

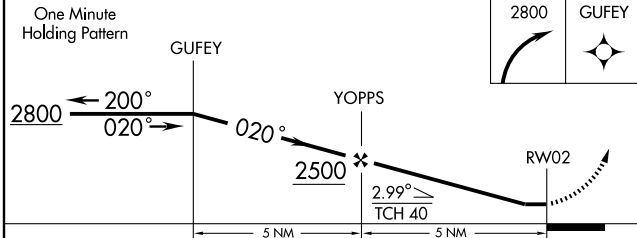
KANSAS CITY CENTER <b>125.25 381.5</b>	MOBERLY CTAF <b>122.7</b>	UNICOM <b>122.8 (CTAF) 0</b>
---	------------------------------	---------------------------------



NC-3, 22 OCT 2009 to 19 NOV 2009

NC-3, 22 OCT 2009 to 19 NOV 2009

ELEV 874



CATEGORY	A	B	C	D
S-2	1320-1	446 (500-1)	1320-1¼ 446 (500-1¼)	NA
CIRCLING	1420-1 546 (600-1)	1620-1¼ 746 (800-1¼)	1620-2½ 746 (800-2½)	NA
COLUMBIA ALTIMETER SETTING MINIMUMS				
S-2	1420-1	546 (600-1)	1420-1½ 546 (600-1½)	NA
CIRCLING	1520-1 646 (700-1)	1700-1¼ 826 (900-1¼)	1700-2¼ 826 (900-2¼)	NA

