

RNAV (GPS) RWY 35

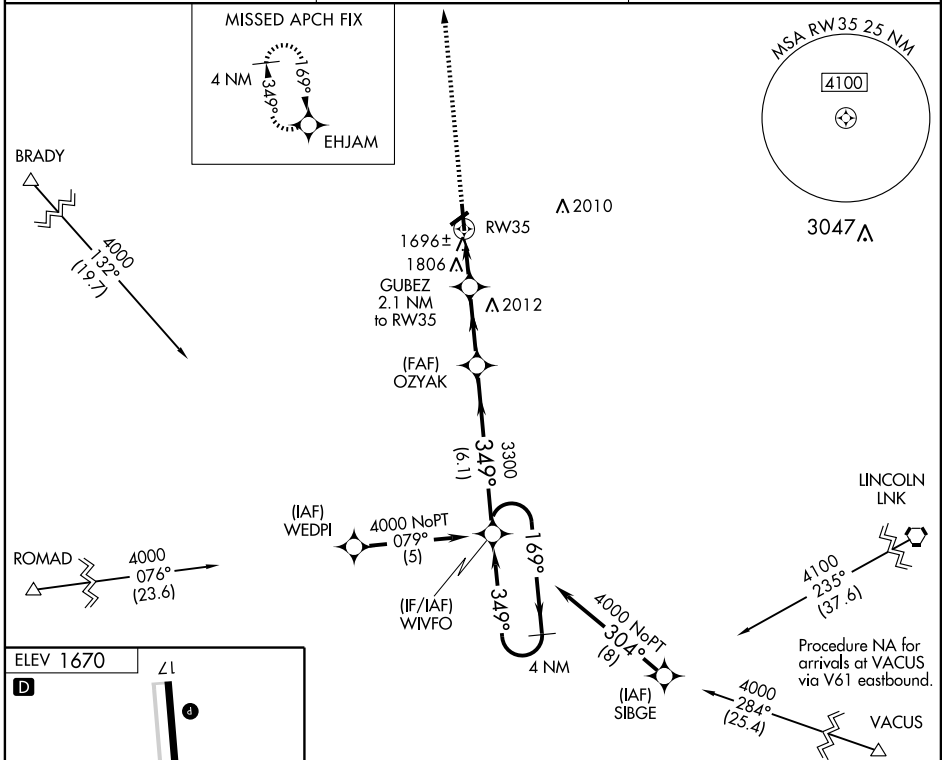
YORK MUNI (JYR)

WAAS CH 49113 W35A	APP CRS 349°	Rwy ldg 5500 TDZE 1670 Apt Elev 1670
--	------------------------	---

⚠ For uncompensated Baro-VNAV systems, LNAV/VNAV NA below -18°C (0°F) or above 54°C (130°F). DME/DME RNP-0.3 NA. When local altimeter setting not received, use Aurora altimeter setting and increase all DA/MDA 60 feet and all LPV, all LNAV/VNAV, and Cat C LNAV visibility ¼ mile. VDP and Baro-VNAV NA when using Aurora altimeter setting.

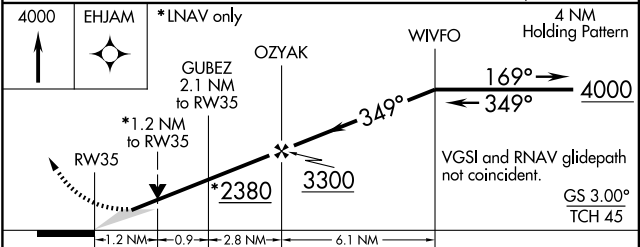
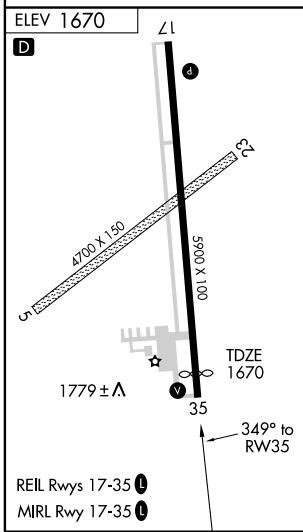
MISSED APPROACH:
Climb to 4000 direct
EHJAM and hold.

AWOS-3 124.175	MINNEAPOLIS CENTER 119.4 278.8	UNICOM 122.8 (CTAF) 0
--------------------------	--	---------------------------------



NC-2, 22 OCT 2009 to 19 NOV 2009

NC-2, 22 OCT 2009 to 19 NOV 2009



CATEGORY	A	B	C	D
LPV DA		1920-¾	250 (300-¾)	NA
LNAV/VNAV DA		2004-1¼	334 (400-1¼)	NA
LNAV MDA		2060-1	390 (400-1)	NA
CIRCLING	2060-1	2120-1	2120-1½	NA
	390 (400-1)	450 (500-1)	450 (500-1½)	