

WAAS CH 86301 W17A	APP CRS 169°	Rwy Idg TDZE 1665 Apt Elev 1670	5900
----------------------------------------	------------------------	-----------------------------------------------------	-------------

RNAV (GPS) RWY 17

YORK MUNI (JYR)

▼ For uncompensated Baro-VNAV systems, LNAV/VNAV NA below -18°C (0°F) or above 54°C (130°F). DME/DME RNP-0.3 NA. Visibility reduction by helicopters NA. When local altimeter setting not received, use Aurora altimeter setting and increase all DA/MDA 60 feet and all LPV and LNAV/VNAV visibility ¼ mile. VDP and Baro-VNAV NA when using Aurora altimeter setting.

MISSED APPROACH:
Climb to 4000 direct WIVFO and hold.

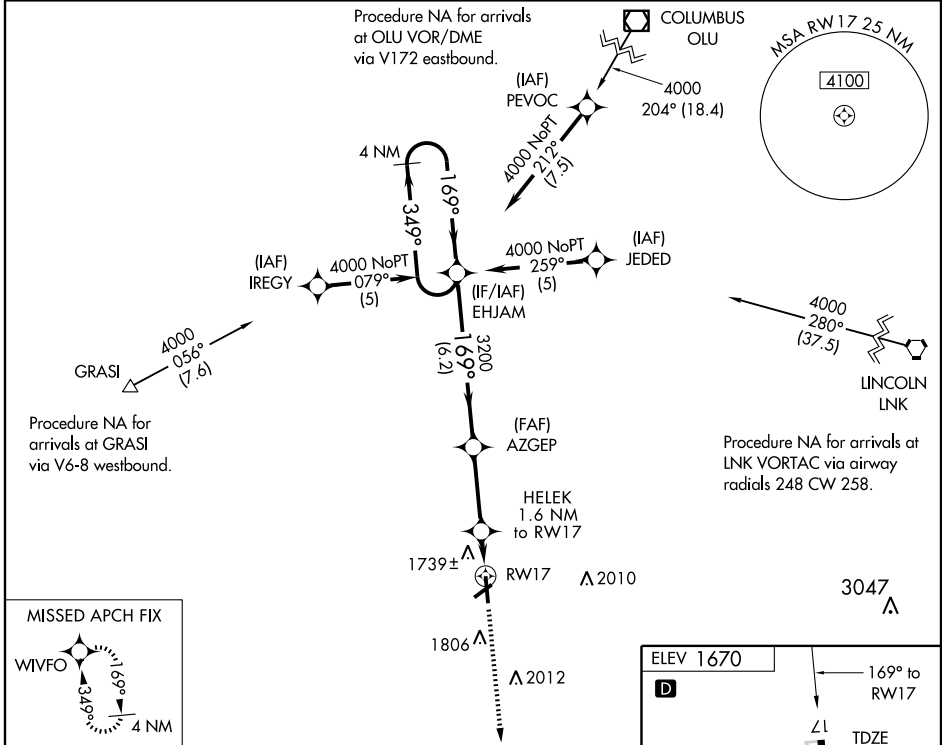
AWOS-3
124.175

MINNEAPOLIS CENTER
119.4 278.8

UNICOM
122.8 (CTAF) 0

NC-2, 22 OCT 2009 to 19 NOV 2009

NC-2, 22 OCT 2009 to 19 NOV 2009



4 NM Holding Pattern		*LNAV only		4000	WIVFO
EHJAM		AZGEP	HELEK 1.6 NM to RW17	RW17	
4000 ← 349°		→ 169°	→ 169°	→ 0.9 NM to RW17	
GS 3.00° TCH 44		3200	*2220		
6.2 NM		3 NM	0.7 NM	0.9 NM	
CATEGORY	A	B	C	D	
LPV DA		1915-¾	250 (300-¾)	NA	
LNAV/VNAV DA		2031-1¼	366 (400-1¼)	NA	
LNAV MDA		2000-1	335 (400-1)	NA	
CIRCLING	2060-1 390 (400-1)	2120-1 450 (500-1)	2120-1½ 450 (500-1½)	NA	

