

YORK, NEBRASKA

AL-6836 (FAA)

NDB RWY 35

YORK MUNI (JYR)

NDB JYR 257	APP CRS 002°	Rwy Idg 5500
		TDZE 1670
		Apt Elev 1670

▽ When local altimeter setting not received, use Aurora altimeter setting and increase all MDA 60 feet.
▲ NA

MISSED APPROACH: Climb to 3000 then climbing left turn to 3300 direct JYR NDB and hold.

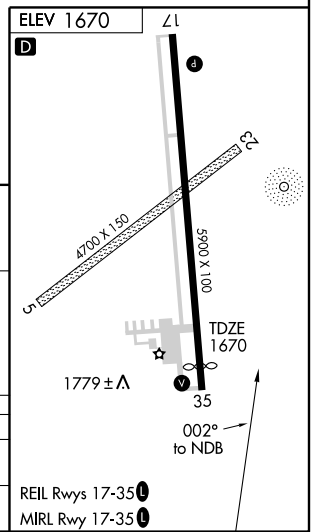
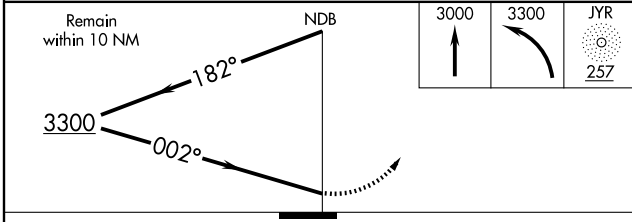
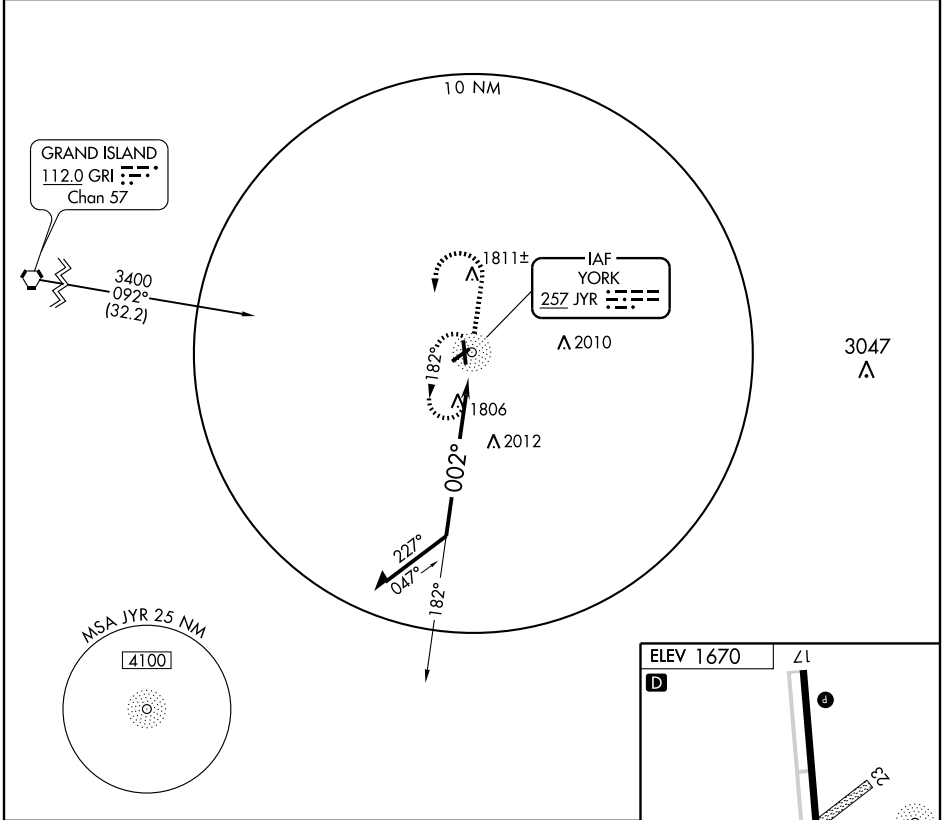
AWOS-3
124.175

MINNEAPOLIS CENTER
119.4 278.8

UNICOM
122.8 (CTAF) 0

NC-2, 22 OCT 2009 to 19 NOV 2009

NC-2, 22 OCT 2009 to 19 NOV 2009



CATEGORY	A	B	C	D
S-35	2420-1 750 (800-1)	2420-1¼ 750 (800-1¼)	2420-2¼ 750 (800-2¼)	NA
CIRCLING	2420-1 750 (800-1)	2420-1¼ 750 (800-1¼)	2420-2¼ 750 (800-2¼)	NA

YORK, NEBRASKA
Amdt 4A 09183

40°54'N-97°37'W

YORK MUNI (JYR)
NDB RWY 35

REIL Rwy 17-35
MIRL Rwy 17-35