

# COPTER VOR/DME 287°

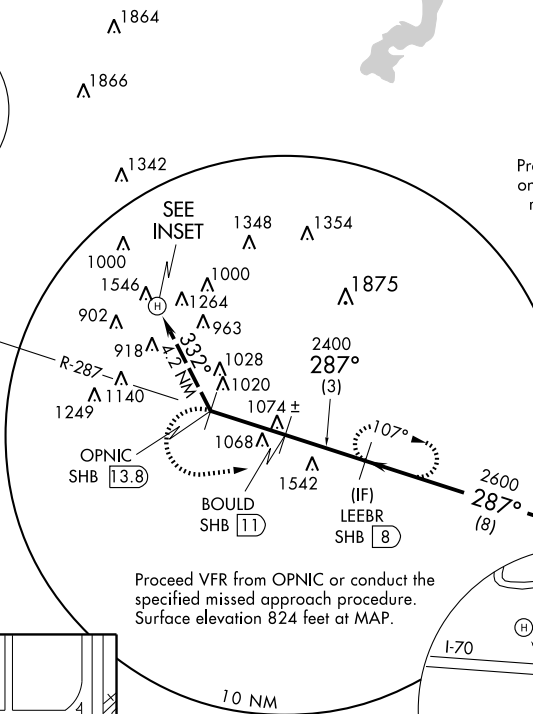
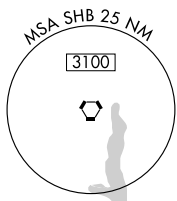
INDIANAPOLIS DOWNTOWN HELIPORT (8A.4)

VORTAC SHB <b>112.0</b> Chan <b>57</b>	APP CRS <b>287°</b>	Rwy Idg TDZE Apt Elev <b>N/A</b> <b>N/A</b> <b>732</b>
--	------------------------	---

**▲ NA** When local altimeter setting not received, use Indianapolis Intl altimeter setting and increase MDA 40 feet. **ACTIVATE High Intensity Pad Lights-CTAF.**

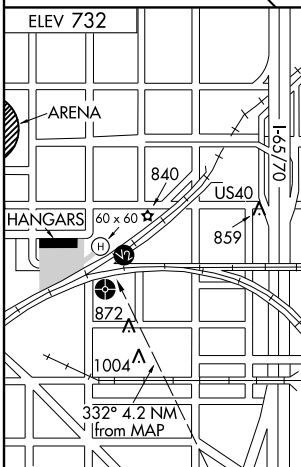
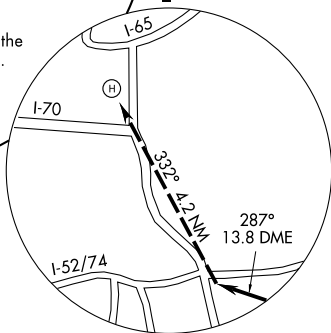
**MISSED APPROACH:** Climbing left turn to 2600 via SHB R-287 to LEEBR/8 DME and hold.

AWOS-3 <b>118.250</b>	INDIANAPOLIS APP CON <b>125.275 317.8</b>	UNICOM <b>123.05 (CTAF) 0</b>
--------------------------	--	----------------------------------

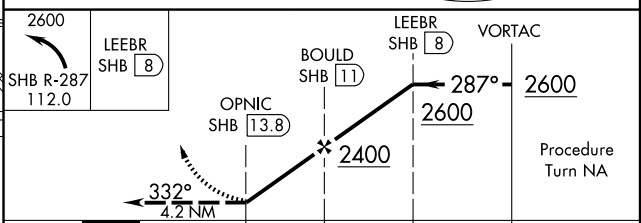


Procedure NA for arrival on SHB VORTAC airway radials 231 CW 312.

IAF  
SHELBYVILLE  
112.0 SHB  
Chan 57  
N39°37.95'-W85°49.46'



**CAUTION:** Heliport located in area of numerous lighted and unlighted obstructions.



Knots	45	60	75	90	105	CATEGORY	COPTER	
Min:Sec						H-287°	1340-3/4	516 (600-3/4)

EC-2, 22 OCT 2009 to 19 NOV 2009

EC-2, 22 OCT 2009 to 19 NOV 2009