

COPTER RNAV (GPS) 291°

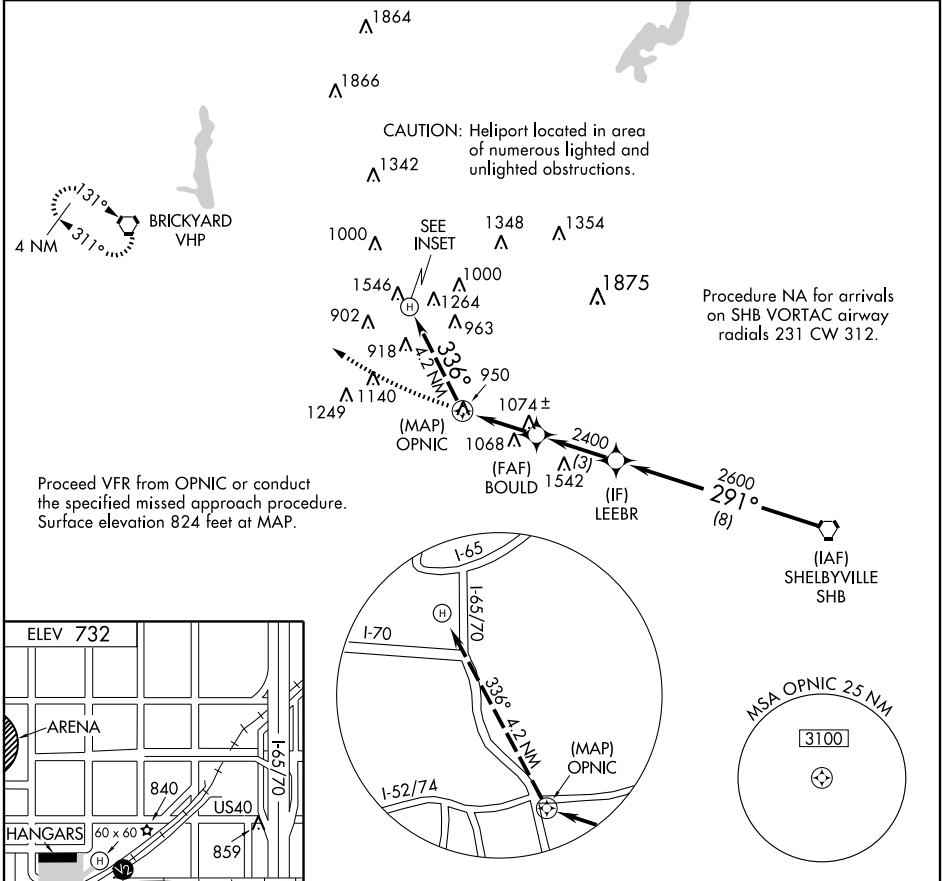
INDIANAPOLIS DOWNTOWN HELIPORT (8A4)

APP CRS 291°	Rwy Idg TDZE Apt Elev	N/A N/A 732
------------------------	-----------------------------	--

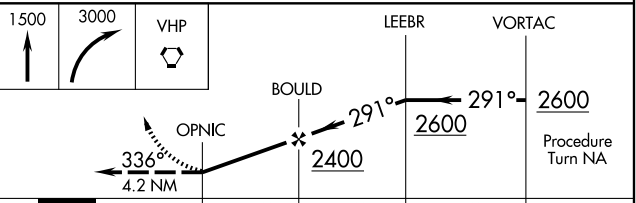
▲ NA When local altimeter setting not received, use Indianapolis Intl altimeter setting and increase MDA 40 feet. Limit final and missed approach airspeed to 70 KIAS. DME/DME RNP-0.3 NA. **ACTIVATE** High Intensity Pad Lights-CTAF.

MISSED APPROACH: Climb to 1500 then climbing right turn to 3000 direct VHP VORTAC and hold.

AWOS-3 118.250	INDIANAPOLIS APP CON 125.275 317.8	UNICOM 123.05 (CTAF) 0
--------------------------	--	----------------------------------



Proceed VFR from OPNIC or conduct the specified missed approach procedure. Surface elevation 824 feet at MAP.



Knots	45	60	75	90	105	CATEGORY	COPTER	
Min:Sec						H-291°	1340-¾ 516 (600-¾)	

EC-2, 22 OCT 2009 to 19 NOV 2009

EC-2, 22 OCT 2009 to 19 NOV 2009