

MOUNDSVILLE, WEST VIRGINIA

AL-6834 (FAA)

VOR/DME AIR 117.1 Chan 118	APP CRS 162°	Rwy Idg TDZE Apt Elev	N/A N/A 1214
--	------------------------	-----------------------------	---

VOR/DME-A

MOUNDSVILLE/MARSHALL COUNTY (MPG)

⚠ When local altimeter setting not received, use Wheeling altimeter setting and increase all MDA 60 feet and Cat B/C visibilities 1/4 mile.

MISSED APPROACH: Climbing right turn to 3000 direct AIR VOR/DME and hold.

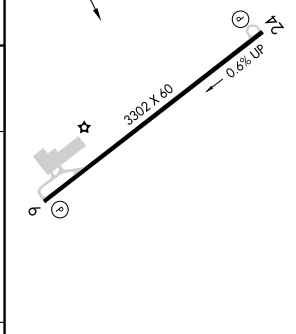
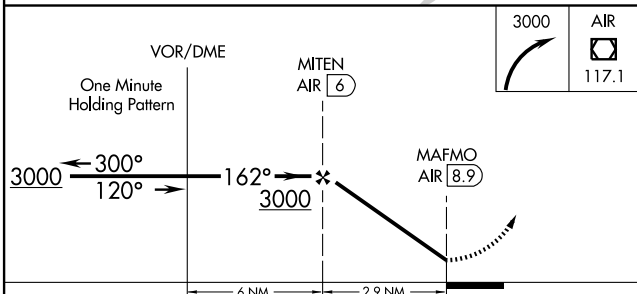
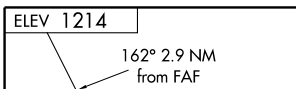
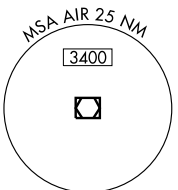
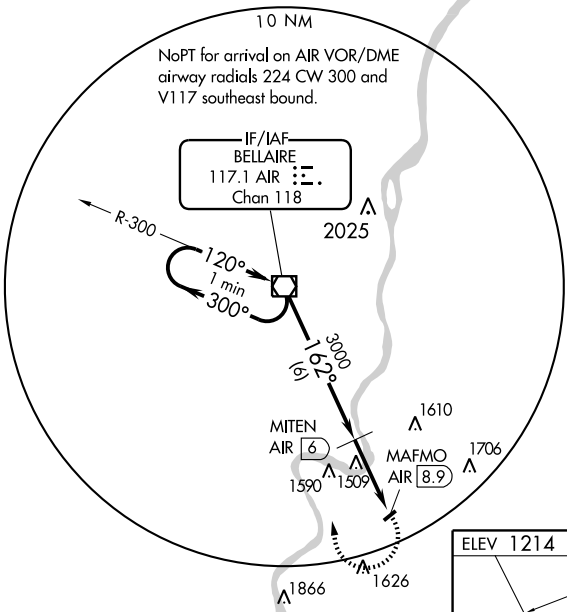
ASOS-3
119.05

CLEVELAND CENTER
120.4 257.975

UNICOM
122.7 (CTAF)

NE-4, 22 OCT 2009 to 19 NOV 2009

NE-4, 22 OCT 2009 to 19 NOV 2009



CATEGORY	A	B	C	D
CIRCLING	1900-1	686 (700-1)	1900-2 686 (700-2)	NA

MIRL Rwy 6-24

MOUNDSVILLE, WEST VIRGINIA
Amdt 2 09071

39°53'N - 80°44'W

MOUNDSVILLE/MARSHALL COUNTY (MPG)
VOR/DME-A