

RNAV (GPS) RWY 24

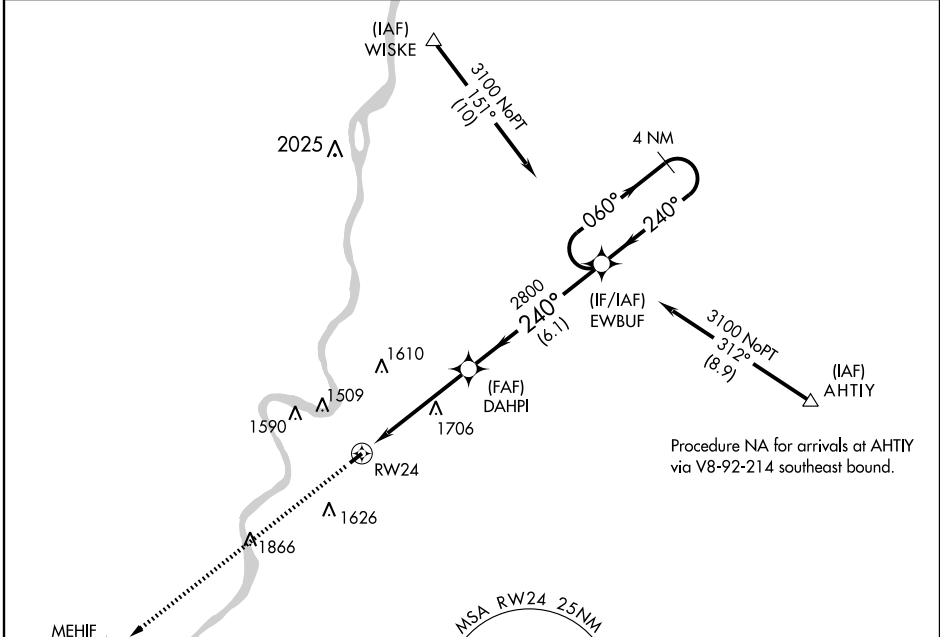
MOUNDSVILLE/MARSHALL COUNTY (MPG)

APP CRS 240°	Rwy Idg 3302
	TDZE 1213
	Apt Elev 1214

NA DME/DME RNP-0.3 NA. Visibility reduction by helicopters NA. When local altimeter setting not received, use Wheeling altimeter setting and increase all MDA 60 feet.

MISSED APPROACH: Climb to 3000 direct MEHIF and hold.

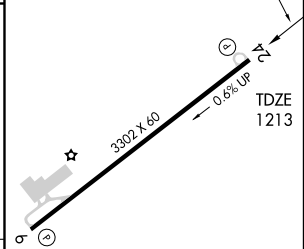
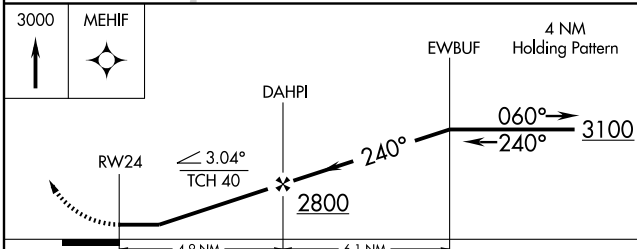
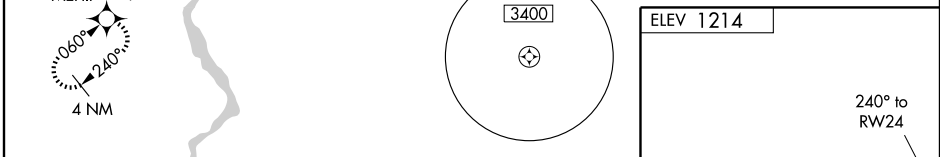
ASOS-3 119.05	CLEVELAND CENTER 120.4 257.975	UNICOM 122.7 (CTAF) 0
-------------------------	--	---------------------------------



Procedure NA for arrivals at AHTIY via V8-92-214 southeast bound.

NE-4, 22 OCT 2009 to 19 NOV 2009

NE-4, 22 OCT 2009 to 19 NOV 2009



CATEGORY	A	B	C	D
LNAV MDA	1960-1 747 (800-1)	1960-1¼ 747 (800-1¼)	1960-2¼ 747 (800-2¼)	NA
CIRCLING	1960-1 746 (800-1)	1960-1¼ 746 (800-1¼)	1960-2¼ 746 (800-2¼)	NA

MIRL Rwy 6-24 0