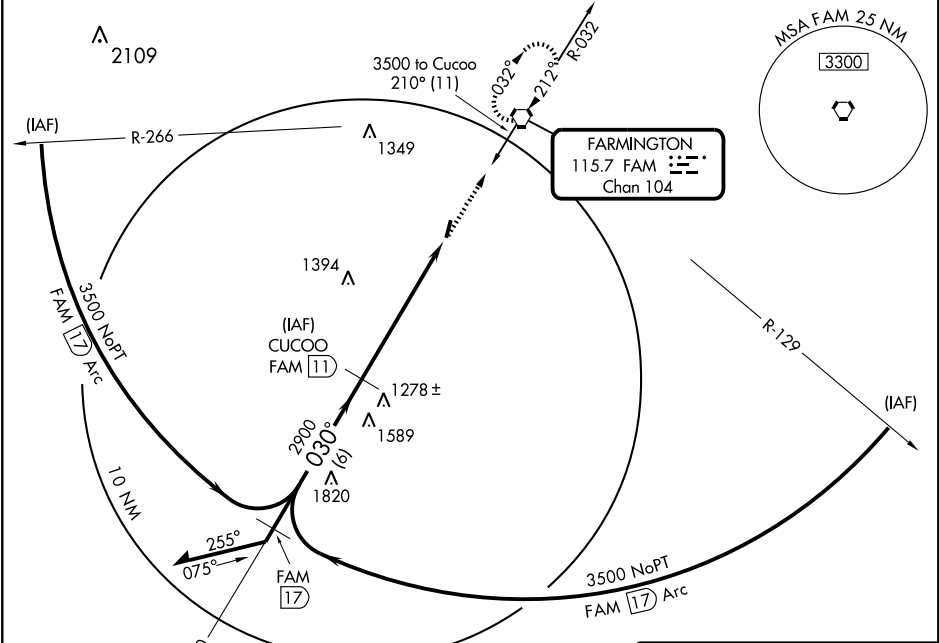


VOR/DME RWY 1  
FREDERICKTOWN RGNL (H88)

APP CRS	Rwy Idg	4000
030°	TDZE	880
	Apt Elev	880

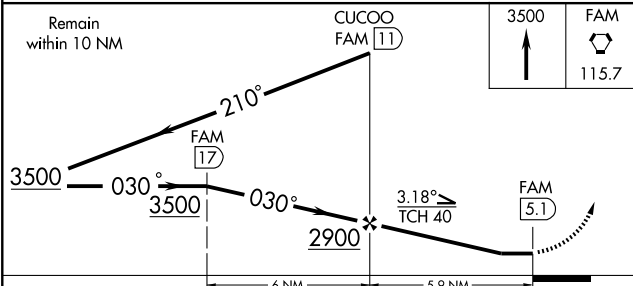
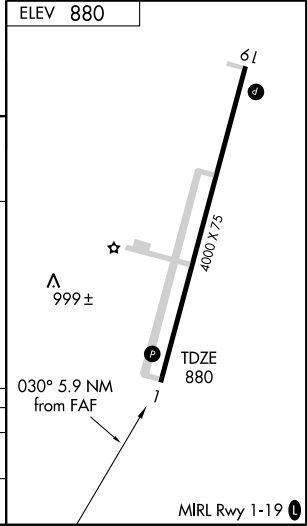
▼ Use Farmington Regional altimeter setting.  
 ▲ NA MISSED APPROACH: Climb to 3500 direct FAM VORTAC and hold.

KANSAS CITY CENTER 127.47 291.7  
 UNICOM 122.8 (CTAF) ①



NC-3, 22 OCT 2009 to 19 NOV 2009

NC-3, 22 OCT 2009 to 19 NOV 2009



CATEGORY	A	B	C	D
S-1	1500-1	620 (700-1)		NA
CIRCLING	1500-1	620 (700-1)		NA