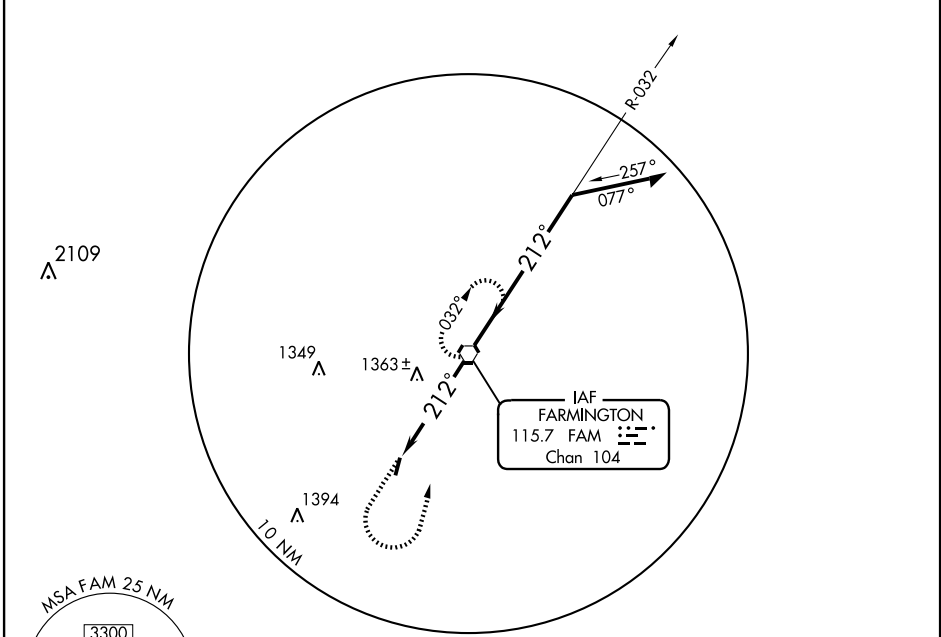


VOR RWY 19
FREDERICKTOWN RGNL(H88)

APP CRS	Rwy Idg	4000
212°	TDZE	880
	Apt Elev	880

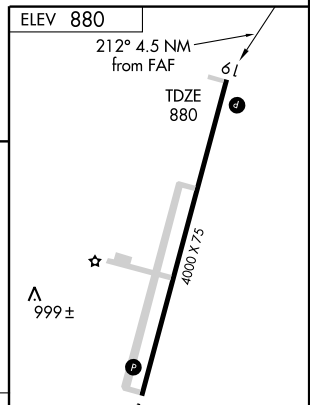
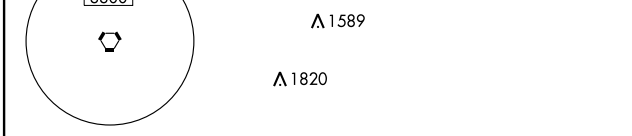
<p>NA Use Farmington Regional altimeter setting.</p>	<p>MISSED APPROACH: Climb to 2000 then climbing left turn to 3000 direct FAM VORTAC and hold.</p>
---	---

<p>KANSAS CITY CENTER 127.47 291.7</p>	<p>UNICOM 122.8 (CTAF) 0</p>
---	---



NC-3, 22 OCT 2009 to 19 NOV 2009

NC-3, 22 OCT 2009 to 19 NOV 2009



<p>2000</p> <p>3000</p> <p>FAM 115.7</p>	<p>VORTAC</p> <p>Remain within 10 NM</p> <p>032°</p> <p>212°</p> <p>2900</p> <p>2300</p> <p>≤ 2.91° TCH 40</p> <p>4.5 NM</p>
--	--

CATEGORY	A	B	C	D
S-19	1660-1 780 (800-1)	1660-1¼ 780 (800-1¼)		NA
CIRCLING	1660-1 780 (800-1)	1660-1¼ 780 (800-1¼)		NA

MIRL Rwy 1-19 0					
FAF to MAP 4.5 NM					
Knots	60	90	120	150	180
Min:Sec	4:30	3:00	2:15	1:48	1:30