

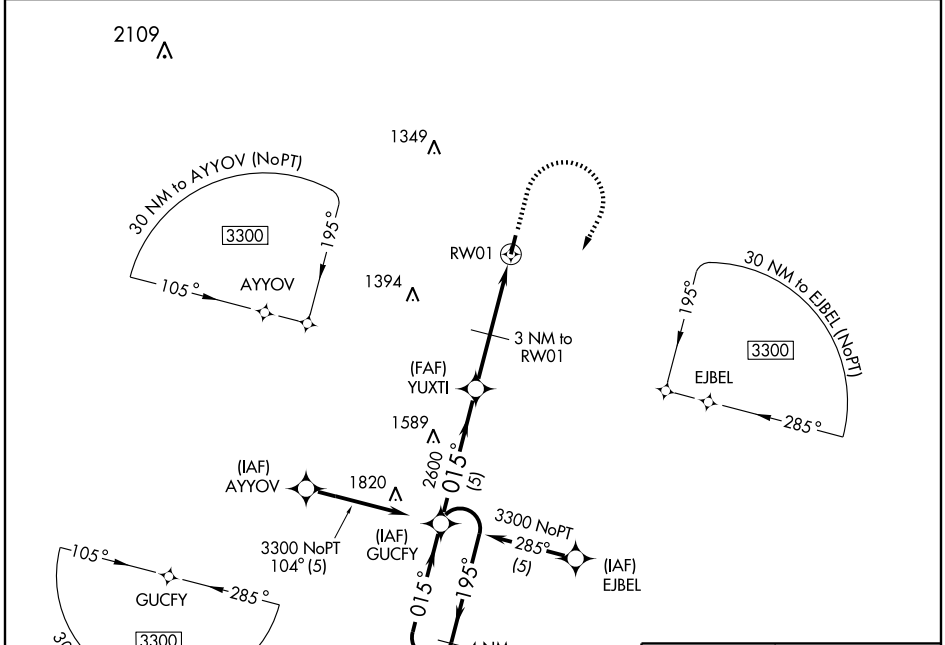
RNAV (GPS) RWY 1

FREDERICKTOWN RGNL (H88)

APP CRS	Rwy Idg	4000
015°	TDZE	880
	Apt Elev	880

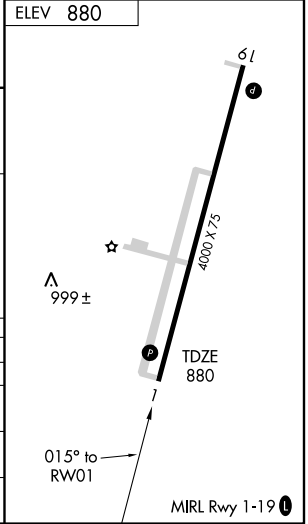
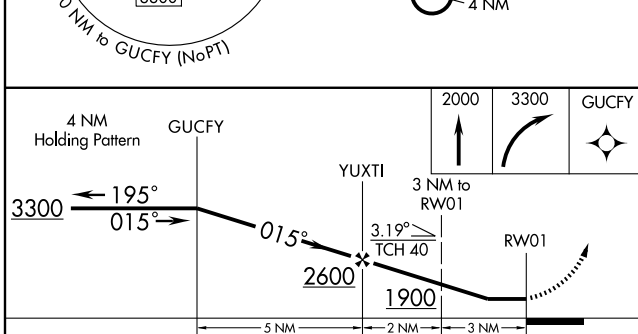
▼ Use Farmington Regional altimeter setting.
▲ NA GPS or RNP-0.3 required. DME/DME RNP-0.3 NA. MISSED APPROACH: Climb to 2000 then climbing right turn to 3300 direct GUCFY WP and hold.

KANSAS CITY CENTER 127.47 291.7	UNICOM 122.8 (CTAF) 0
---	---------------------------------



NC-3, 22 OCT 2009 to 19 NOV 2009

NC-3, 22 OCT 2009 to 19 NOV 2009



CATEGORY	A	B	C	D
GLS DA			NA	
LNAV/VNAV DA			NA	
LNAV MDA	1300-1	420 (500-1)		NA
CIRCLING	1420-1	540 (600-1)		NA