

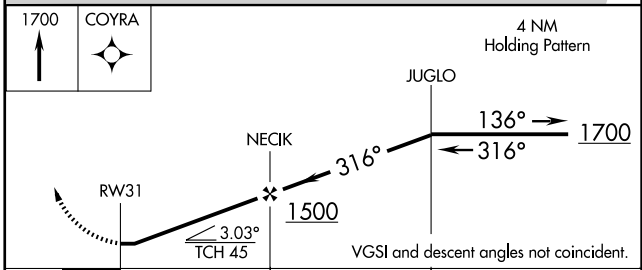
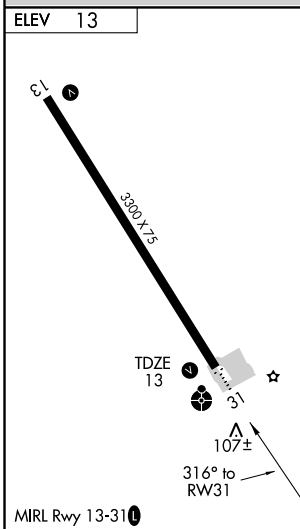
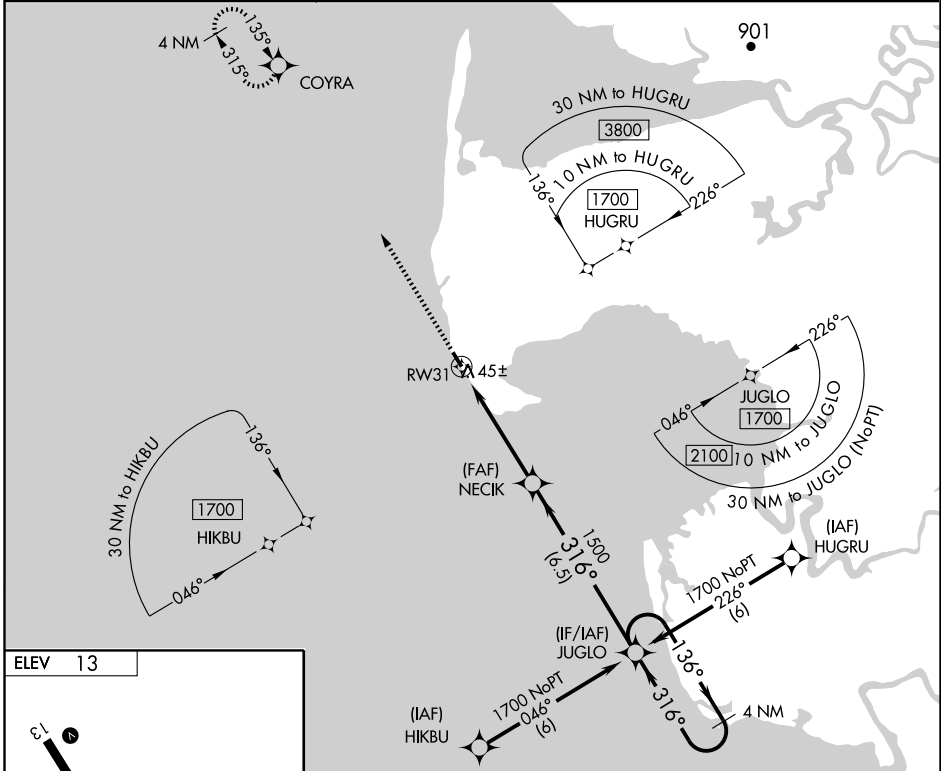
# RNAV (GPS) RWY 31

HOOPER BAY (HPB) (PAHP)

APP CRS <b>316°</b>	Rwy Idg <b>3300</b>
	TDZE <b>13</b>
	Apt Elev <b>13</b>

<p><b>▼</b> DME/DME RNP-0.3 NA. When local altimeter setting not received, use Scammon Bay altimeter setting and increase all MDA 60 feet and Cats C/D visibility 1/4 mile.</p> <p><b>▲</b> Visibility reduction by helicopters NA. Inoperative table does not apply.</p>	<p>ODALS</p>	<p>MISSED APPROACH: Climb to 1700 direct COYRA and hold.</p>
---	--------------	--

<p>AWOS-3 <b>135.1</b></p>	<p>KENAI RADIO <b>122.4</b></p>	<p>CTAF <b>123.0</b></p>
--------------------------------	-------------------------------------	------------------------------



CATEGORY	A	B	C	D
LNAV MDA	380-1		367 (400-1)	380-1¼ 367 (400-1¼)
CIRCLING	420-1 407 (500-1)	480-1 467 (500-1)	480-1½ 467 (500-1½)	580-2 567 (600-2)

AK, 22 OCT 2009 to 17 DEC 2009

AK, 22 OCT 2009 to 17 DEC 2009