

RNAV (GPS) RWY 13

HOOPER BAY (HPB) (PAHP)

APP CRS 136°	Rwy Idg TDZE Apt Elev	3300 13 13
------------------------	-----------------------------	---------------------------------------

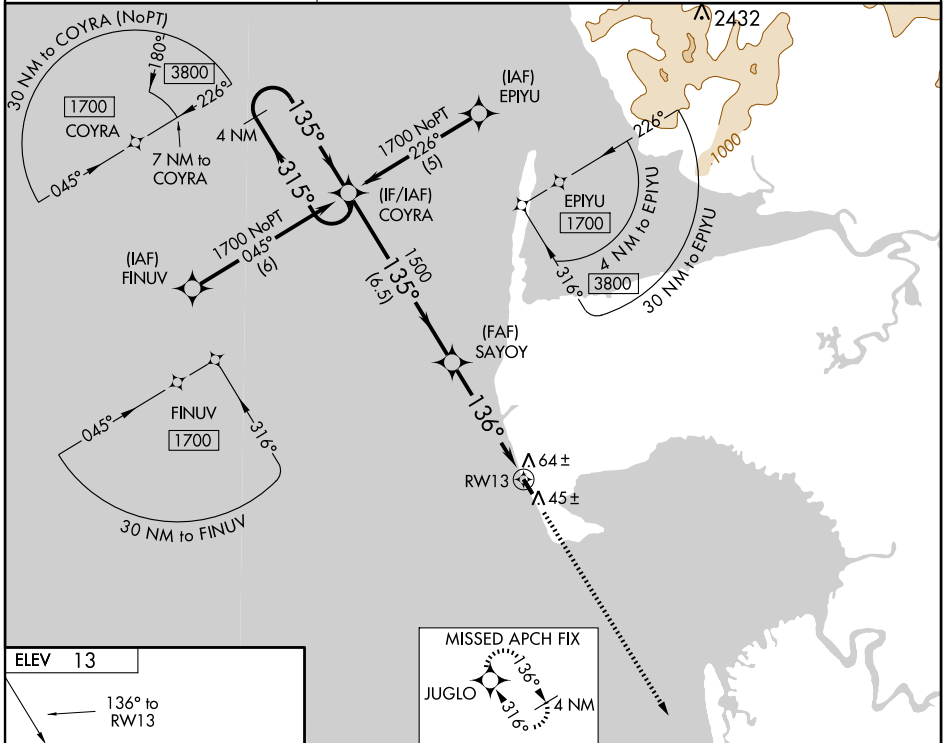
▽ DME/DME RNP-0.3 NA. If local altimeter setting not received, use Scammon Bay altimeter setting and increase all MDAs 60 feet.
▲ Visibility reduction by helicopters NA.

MISSED APPROACH: Climb to 1700 direct JUGLO and hold.

AWOS-3
135.1

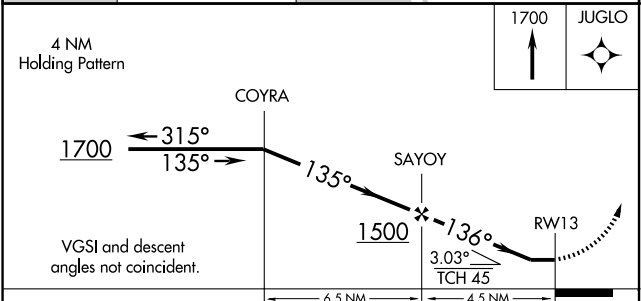
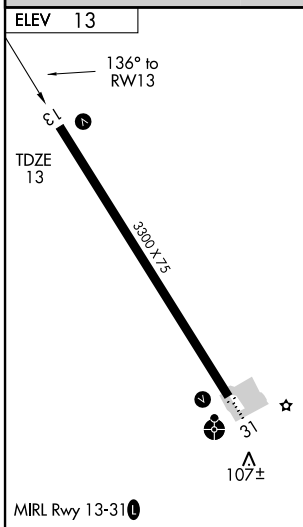
KENAI RADIO
122.4

CTAF
123.0



AK, 22 OCT 2009 to 17 DEC 2009

AK, 22 OCT 2009 to 17 DEC 2009



CATEGORY	A	B	C	D
LNAV MDA	380-1		367 (400-1)	380-1 ¹ / ₄ 367 (400-1 ¹ / ₄)
CIRCLING	420-1 407 (500-1)	480-1 467 (500-1)	480-1 ¹ / ₂ 467 (500-1 ¹ / ₂)	580-2 567 (600-2)