

SIBLEY, IOWA

AL-6829 (FAA)

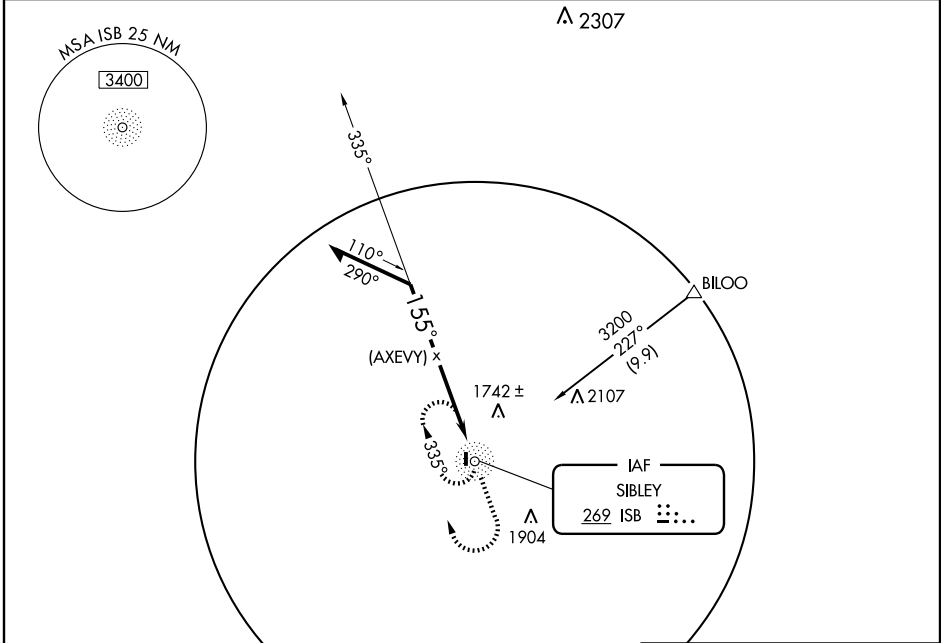
# NDB or GPS RWY 17

SIBLEY MUNI (ISB)

NDB ISB <b>269</b>	APP CRS <b>155°</b>	Rwy Idg <b>2987</b>
		TDZE <b>1537</b>
		Apt Elev <b>1537</b>

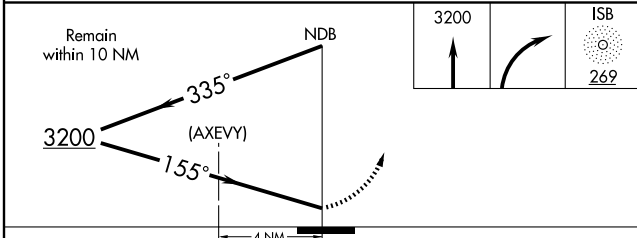
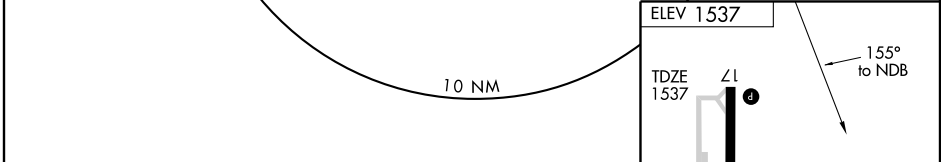
**▲ NA** Use Worthington MN altimeter setting. MISSED APPROACH: Climb to 3200 then right turn direct ISB NDB and hold.

MINNEAPOLIS CENTER **132.05 317.4** UNICOM **122.8 (CTAF) 0**

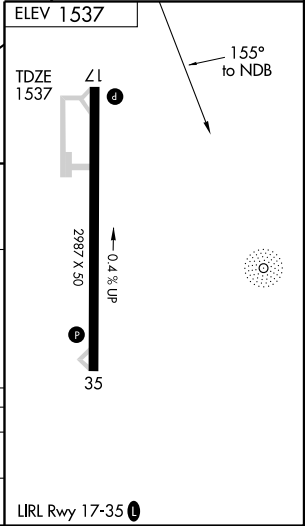


NC-3, 22 OCT 2009 to 19 NOV 2009

NC-3, 22 OCT 2009 to 19 NOV 2009



CATEGORY	A	B	C	D
S-17	2160-1	623 (700-1)	2160-1 <sup>3</sup> / <sub>4</sub> 623 (700-1 <sup>3</sup> / <sub>4</sub> )	NA
CIRCLING	2160-1	623 (700-1)	2160-1 <sup>3</sup> / <sub>4</sub> 623 (700-1 <sup>3</sup> / <sub>4</sub> )	NA



SIBLEY, IOWA  
Amdt 1B 09071

43°22'N-95°46'W

# NDB or GPS RWY 17

SIBLEY MUNI (ISB)

LIRL Rwy 17-35 0