

# RNAV (GPS) RWY 9

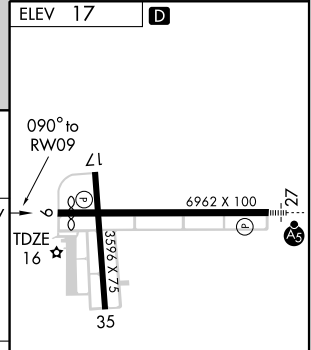
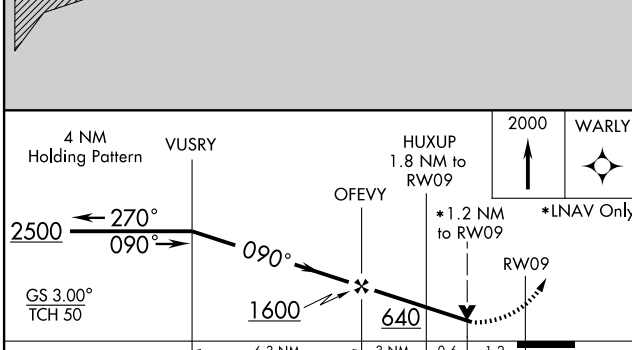
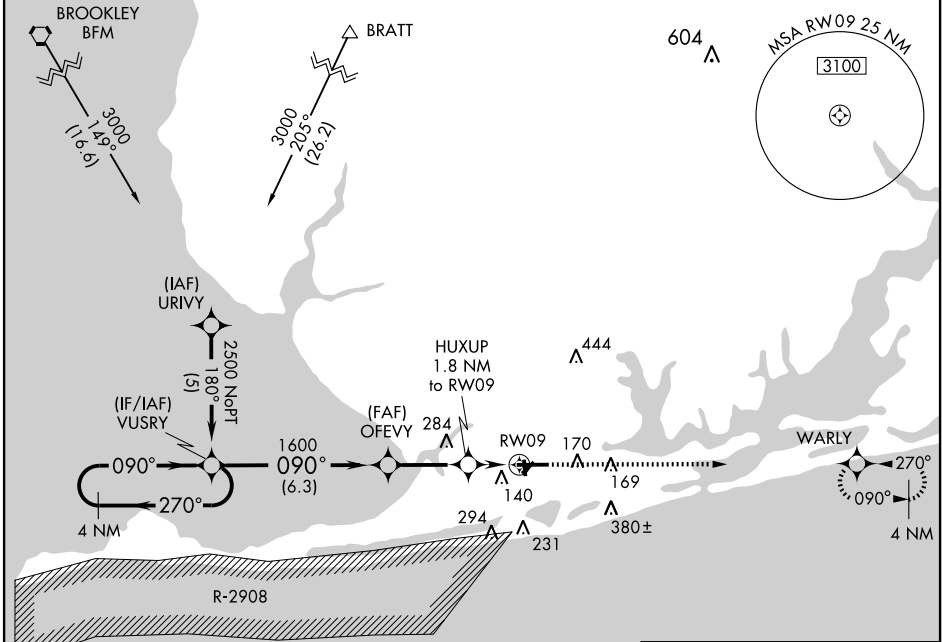
GULF SHORES/JACK EDWARDS (JKA)

WAAS CH <b>86503</b> <b>W09A</b>	APP CRS <b>090°</b>	Rwy Idg TDZE Apt Elev	<b>6500</b> <b>16</b> <b>17</b>
--	------------------------	-----------------------------	---------------------------------------

**⚠** If local altimeter setting not received, use Pensacola Rgnl, FL altimeter setting and increase all DAs/MDAs 80 feet. For uncompensated Baro-VNAV systems, LNAV/VNAV NA below -15°C (5°F) or above 48°C (118°F). DME/DME RNP-0.3 NA. Visibility reduction by helicopters NA. VDP and Baro-VNAV NA when using Pensacola Rgnl, FL altimeter setting.

**MISSED APPROACH:**  
Climb to 2000 direct  
**WARLY** and hold.

AWOS-3 <b>134.525</b>	PENSACOLA APP CON <b>120.05 376.8</b>	CLNC DEL <b>124.55</b>	UNICOM <b>122.7 (CTAF)</b>
--------------------------	--	---------------------------	-------------------------------



CATEGORY	A	B	C	D
LPV DA		354-1¼	338 (400-1¼)	
LNAV/VNAV DA		476-1½	460 (500-1½)	
LNAV MDA	440-1	424 (500-1)	440-1¼	424 (500-1¼)
CIRCLING	480-1	463 (500-1)	480-1½	580-2
			463 (500-1½)	563 (600-2)

MRL Rwy 17-35  
HIRL Rwy 9-27

SE-4, 22 OCT 2009 to 19 NOV 2009

SE-4, 22 OCT 2009 to 19 NOV 2009