

WAAS CH 99503 W27A	APP CRS 270°	Rwy Idg TDZE Apt Elev	6500 17 17
--	------------------------	-----------------------------	---------------------------------------

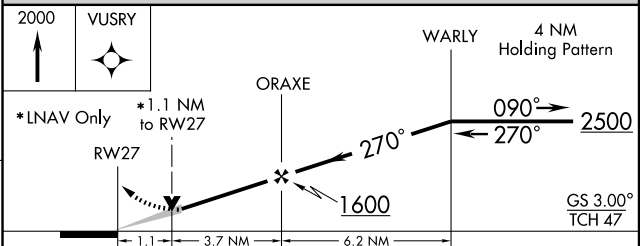
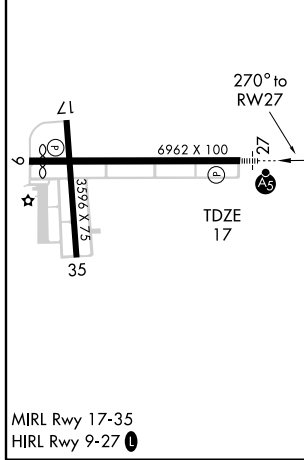
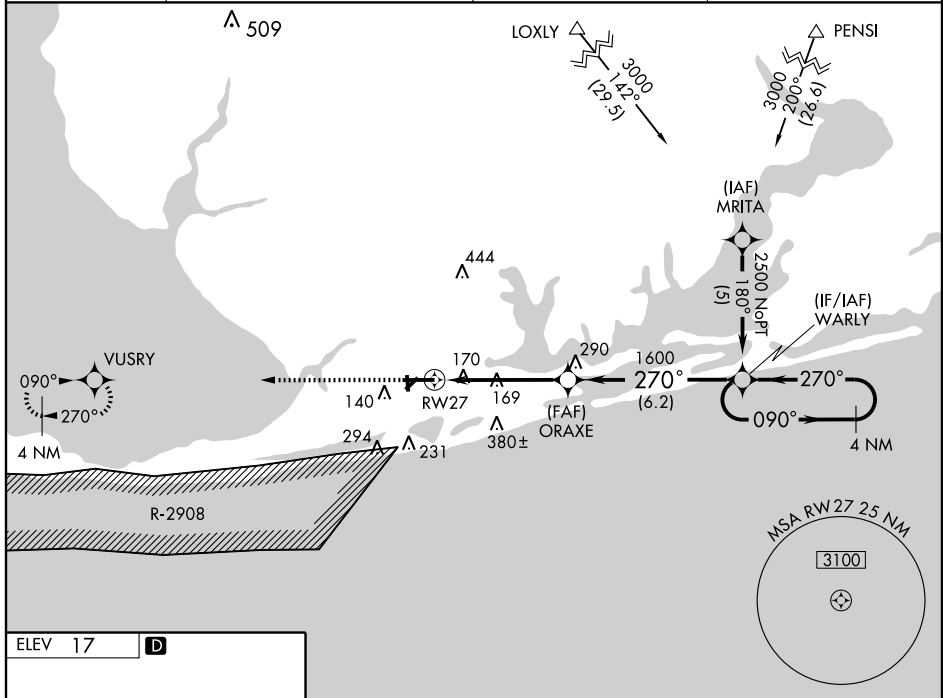
RNAV (GPS) RWY 27

GULF SHORES/JACK EDWARDS (JKA)

▼ If local altimeter setting not received, use Pensacola Rgnl, FL altimeter setting and increase all DAs/MDAs 80 feet. DME/DME RNP-0.3 NA. VDP and Baro-VNAV NA when using Pensacola Rgnl, FL altimeter setting. For uncompensated Baro-VNAV systems, LNAV/VNAV NA below -1.5°C (5°F) or above 48°C (118°F). For inoperative MALSR, increase LPV all Cats visibility to 1½ and LNAV Cat D visibility to 1¼.

MALSR
MISSED APPROACH:
Climb to 2000 direct
VUSRY and hold.

AWOS-3 134.525	PENSACOLA APP CON 120.05 376.8	CLNC DEL 124.55	UNICOM 122.7 (CTAF)
--------------------------	--	---------------------------	-------------------------------



CATEGORY	A	B	C	D
LPV DA	448-1		431 (500-1)	
LNAV/VNAV DA	480-1¼		463 (500-1¼)	
LNAV MDA	420-½	403 (500-½)	420-¾ 403 (500-¾)	420-1 403 (500-1)
CIRCLING	480-1	463 (500-1)	480-1½ 463 (500-1½)	580-2 563 (600-2)

SE-4, 22 OCT 2009 to 19 NOV 2009

SE-4, 22 OCT 2009 to 19 NOV 2009