

GULF SHORES, ALABAMA

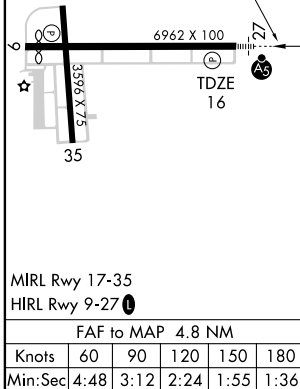
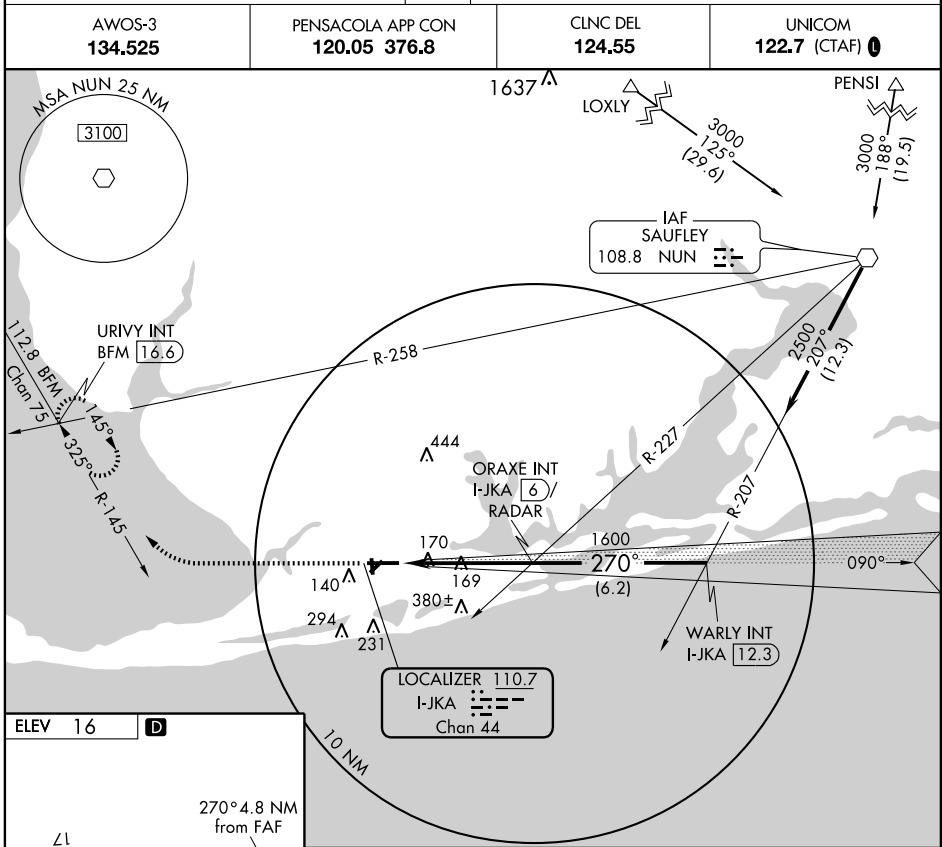
AL-6827 (FAA)

LOC/DME I-JKA <b>110.7</b> Chan <b>44</b>	APP CRS <b>270°</b>	Rwy Idg TDZE Apt Elev	<b>6500</b> <b>16</b> <b>16</b>
---	------------------------	-----------------------------	---------------------------------------

# ILS or LOC RWY 27

GULF SHORES/JACK EDWARDS (JKA)

	MISSED APPROACH: Climb to 2000 via 270° heading and BFM VORTAC R-145 to URIVY Int/BFM 16.6 DME and hold.		
	AWOS-3 <b>134.525</b>	PENSACOLA APP CON <b>120.05 376.8</b>	CINC DEL <b>124.55</b>



ELEV 16	<b>D</b>	2000		BFM R-145 112.8		URIVY INT BFM 16.6		ORAXE INT I-JKA 6 RADAR		WARY I-JKA 12.3	
		Hdg 270°		I-JKA 1.3		1600		270°		2500	
MIRL Rwy 17-35 HIRL Rwy 9-27 <b>0</b>		Procedure Turn NA GS 3.00° TCH 47		4.8 NM		6.2 NM					

CATEGORY	A	B	C	D
S-ILS 27 DH	216-1/2 200 (200-1/2)			
S-LOC 27 MDA	540-1/2	524 (600-1/2)	540-1 524 (600-1)	540-1 1/4 524 (600-1 1/4)
CIRCLING	540-1	524 (600-1)	540-1 1/2 524 (600-1 1/2)	580-2 564 (600-2)

GULF SHORES, ALABAMA  
Orig 09295

30°17'N-87°40'W

# ILS or LOC RWY 27

SE-4, 22 OCT 2009 to 19 NOV 2009

SE-4, 22 OCT 2009 to 19 NOV 2009