

DUMAS, ARKANSAS

AL-6824 (FAA)

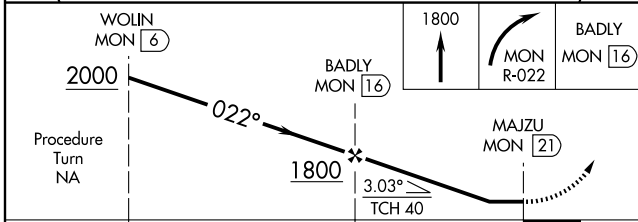
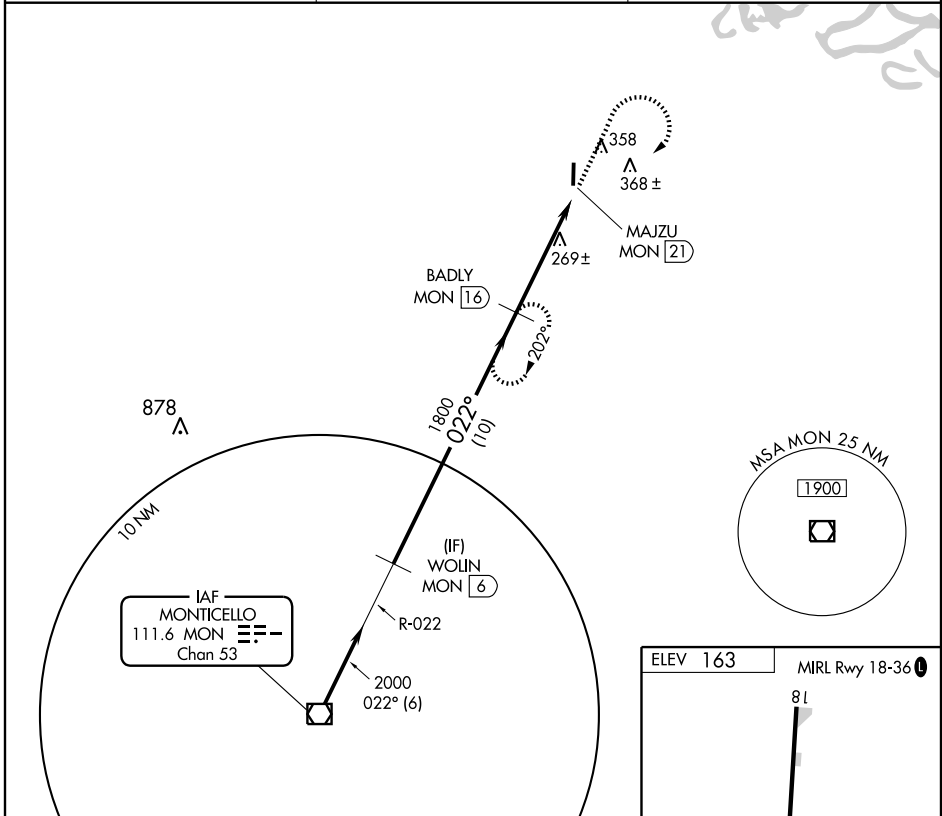
VOR/DME MON <b>111.6</b> Chan <b>53</b>	APP CRS <b>022°</b>	Rwy Idg <b>5000</b> TDZE <b>163</b> Apt Elev <b>163</b>
---	------------------------	---

# VOR/DME RWY 36

DUMAS/BILLY FREE MUNI (ØMØ)

▼ Use Pine Bluff altimeter setting; if not received, use Greenville, MS altimeter setting and increase all MDAs 40 feet.  
 ▲ NA MISSED APPROACH: Climb to 1800 then right turn via MON VOR/DME R-022 to BADLY/16 DME and hold.

PINE BLUFF ASOS <b>120.775</b>	MEMPHIS CENTER <b>135.875 269.35</b>	UNICOM <b>122.8</b> (CTAF) <b>Ø</b>
-----------------------------------	---	--



ELEV 163	MIRL Rwy 18-36 Ø				
TDZE 163	36				
022° 5 NM from FAF					
Knots	60	90	120	150	180
Min:Sec					

CATEGORY	A	B	C	D
S-36	600-1 437 (500-1)	600-1¼ 437 (500-1¼)	600-1½ 437 (500-1½)	NA
CIRCLING	780-1 617 (700-1)	780-1¼ 617 (700-1¼)	780-1¾ 617 (700-1¾)	NA

DUMAS, ARKANSAS  
Amdt 3 08269

33°53'N-91°32'W

# DUMAS/BILLY FREE MUNI (ØMØ)

## VOR/DME RWY 36

SC-1, 22 OCT 2009 to 19 NOV 2009

SC-1, 22 OCT 2009 to 19 NOV 2009