

MEKORYUK, ALASKA

AL-6821 (FAA)

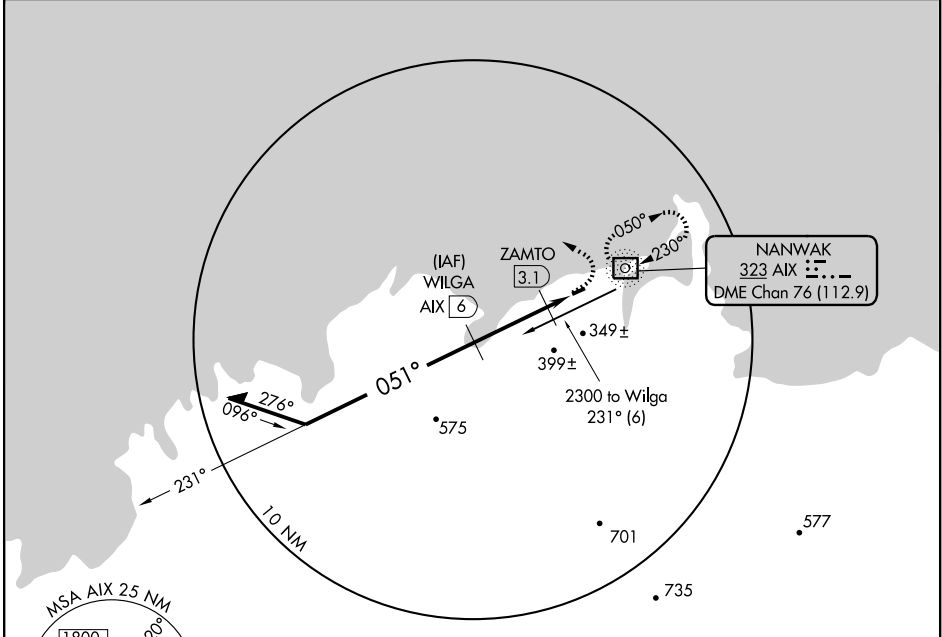
NDB/DME AIX <b>323</b>	APP CRS <b>051°</b>	Rwy Idg TDZE Apt Elev	<b>N/A</b> <b>N/A</b> <b>48</b>
Chan <b>76 (112.9)</b>			

# NDB/DME-A

MEKORYUK (MYU) (PAMY)

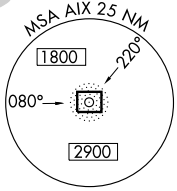
**▼** MISSED APPROACH: Climb to 1600, then climbing left turn to 2300 direct AIX NDB/DME and hold, continue climb-in-hold to 2300.

AWOS-3 <b>123.9</b>	ANCHORAGE CENTER <b>124.5 372.0</b>	CTAF <b>122.9 0</b>
------------------------	--	------------------------

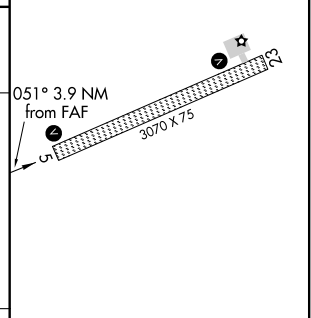
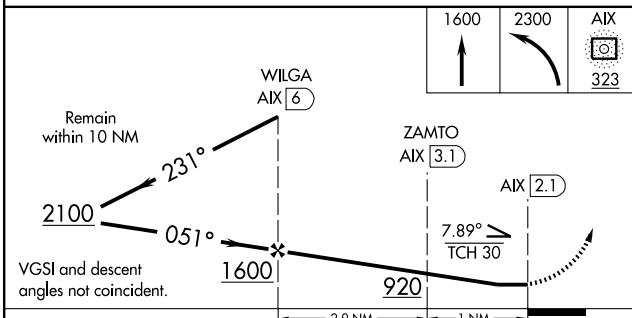


AK, 22 OCT 2009 to 17 DEC 2009

AK, 22 OCT 2009 to 17 DEC 2009



ELEV 48
---------



CATEGORY	A	B	C	D
CIRCLING	700-1	652 (700-1)	700-1¾ 652 (700-1¾)	720-2¼ 672 (700-2¼)

REIL Rwys 5 and 23  
MIRL Rwy 5-23 0

MEKORYUK, ALASKA  
Amdt 4 09127

60°22'N-166°16'W

# MEKORYUK (MYU) (PAMY)

## NDB/DME-A