

MEKORYUK, ALASKA

AL-6821 (FAA)

NDB/DME AIX 323	APP CRS 230°	Rwy Idg TDZE Apt Elev	N/A N/A 48
Chan 76 (112.9)			

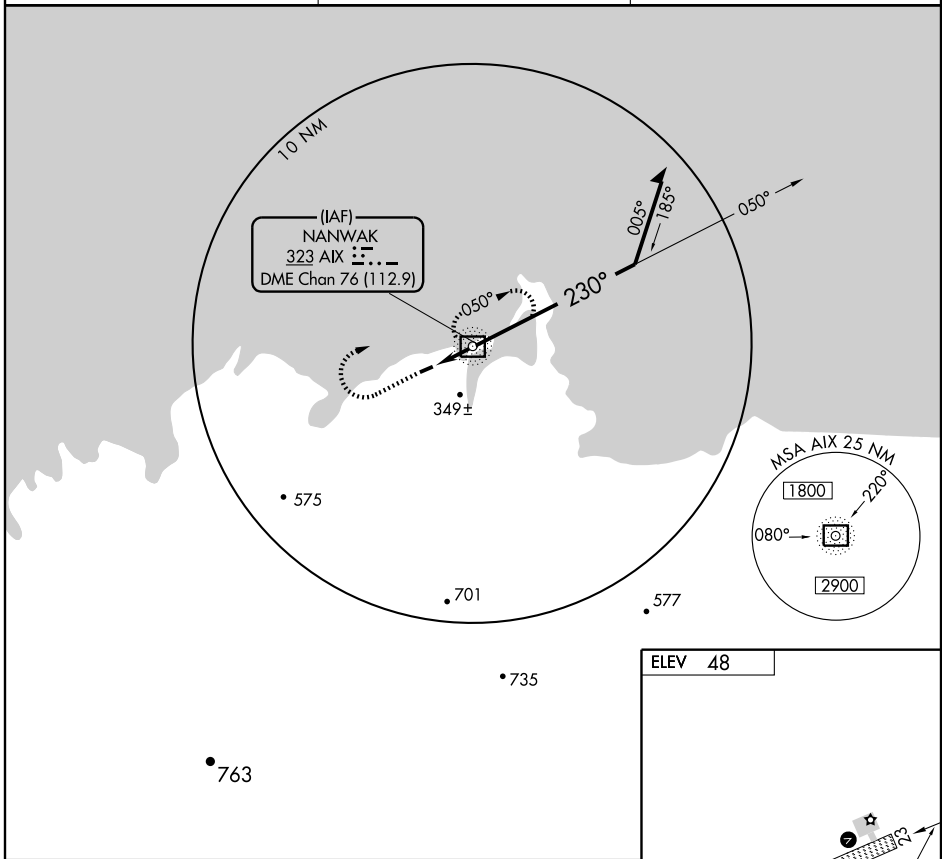
NDB-B
MEKORYUK (MYU) (PAMY)

MISSED APPROACH: Climb to 800 then climbing right turn to 1800 direct AIX NDB/DME and hold, continue climb-in-hold to 1800.

AWOS-3
123.9

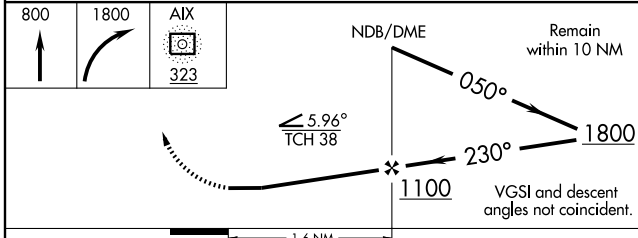
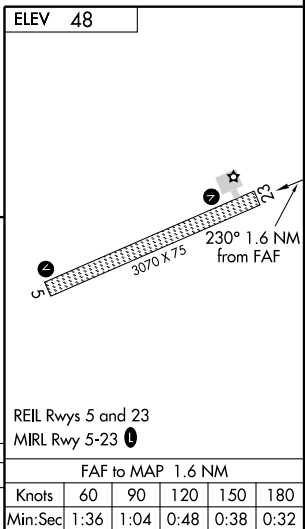
ANCHORAGE CENTER
124.5 372.0

CTAF
122.9 0



AK, 22 OCT 2009 to 17 DEC 2009

AK, 22 OCT 2009 to 17 DEC 2009



CATEGORY	A	B	C	D
CIRCLING	700-1	652 (700-1)	700-1¾ 652 (700-1¾)	720-2¼ 672 (700-2¼)

MEKORYUK, ALASKA
Orig 07130

60°22'N-166°16'W

MEKORYUK (MYU) (PAMY)
NDB-B