

MACHIAS, MAINE

AL-6820 (FAA)

# RNAV (GPS) RWY 36

MACHIAS VALLEY (MVM)

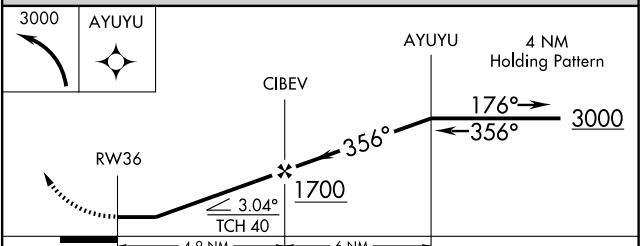
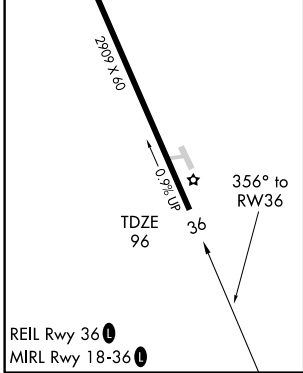
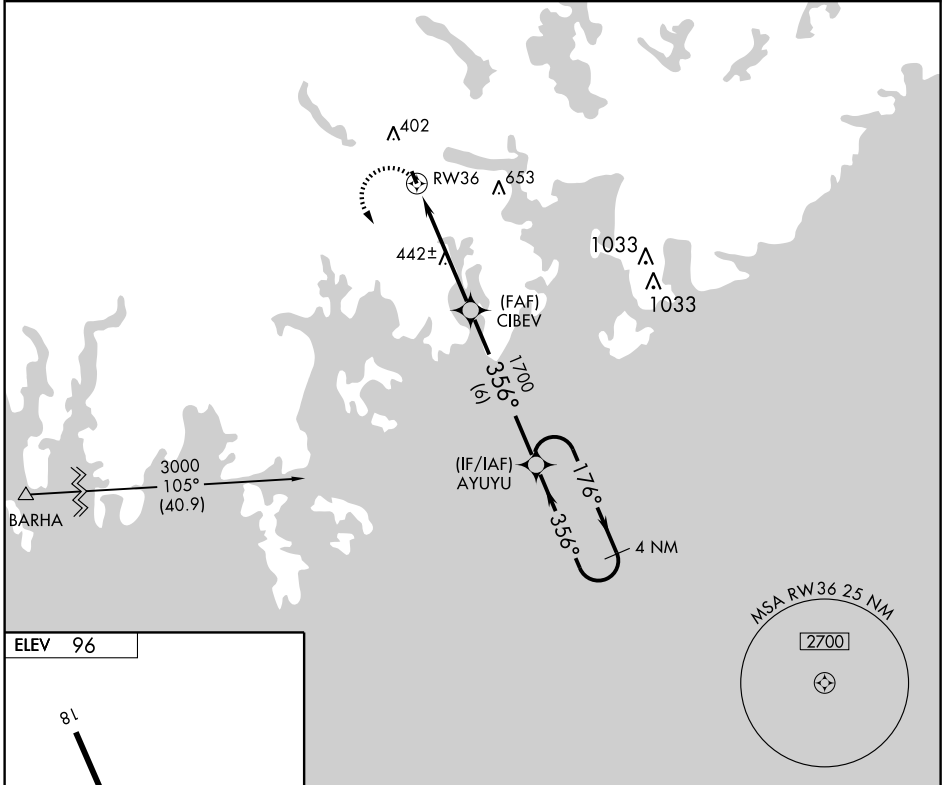
APP CRS <b>356°</b>	Rwy Idg <b>2909</b>
	TDZE <b>96</b>
	Apt Elev <b>96</b>

**⚠** Circling NA at night to Rwy 18. DME/DME RNP-0.3 NA.  
**⚠** NA Use Bar Harbor altimeter setting, if not received, use Bangor altimeter setting and increase all MDAs 60 feet.

**MISSED APPROACH:** Climbing left turn to 3000 direct AYUYU and hold.

BOSTON CENTER  
**124.25 290.5**

UNICOM  
**122.8 (CTAF)**



CATEGORY	A	B	C	D
LNAV MDA	940-1 844 (900-1)	940-1½ 844 (900-1½)	NA	
CIRCLING	1100-1½ 1004 (1100-1½)	1100-1½ 1004 (1100-1½)	NA	

MACHIAS, MAINE  
Orig-A 08157

44°42'N-67°29'W

# MACHIAS VALLEY (MVM) RNAV (GPS) RWY 36

NE-1, 22 OCT 2009 to 19 NOV 2009

NE-1, 22 OCT 2009 to 19 NOV 2009