

RNAV (GPS) RWY 21

TOGIAK (TOG)(PATG)

APP CRS 197°	Rwy Idg 4400
	TDZE 21
	Apt Elev 21

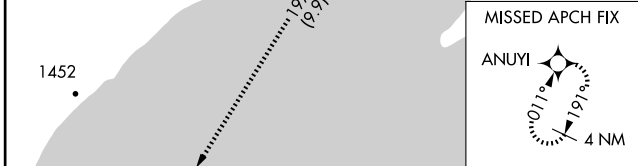
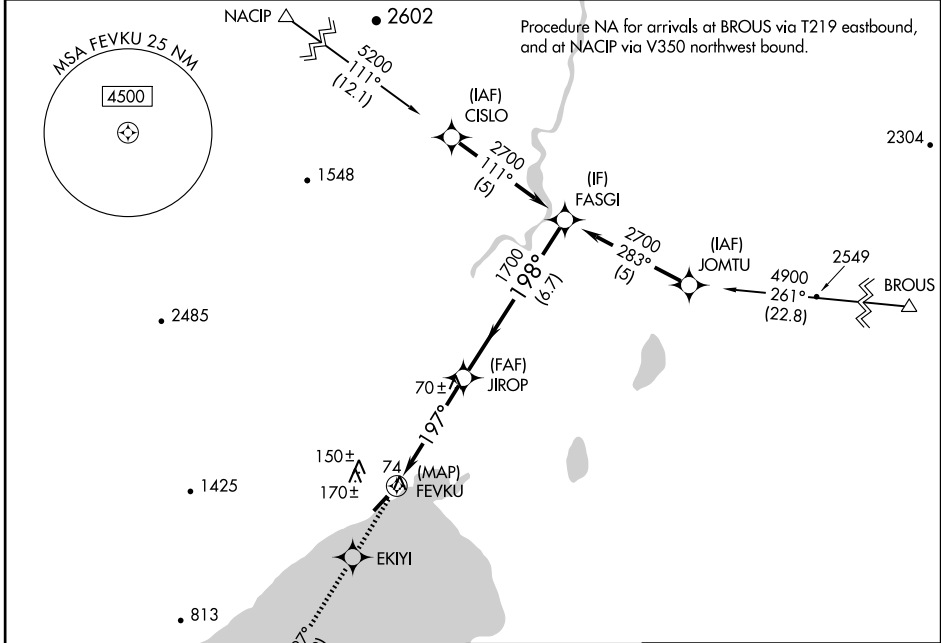
⚠ Circling NA for Cat D NW of Rwy 3-21.
DME/DME RNP-0.3 NA.
Procedure NA at night.

MISSED APPROACH: Climb to 2700 direct EKIYI and via 197° track to ANUYI and hold.

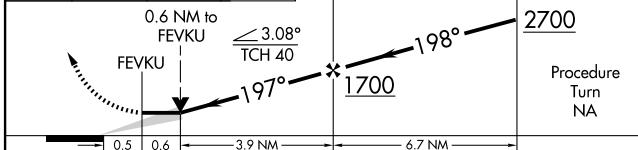
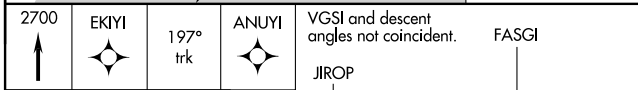
AWOS-3
119.3

ANCHORAGE CENTER
132.75 282.35

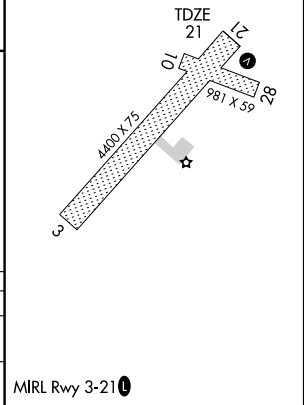
CTAF
122.5



ELEV 21



CATEGORY	A	B	C	D
LNVA MDA	380-1 359 (400-1)		380-1½ 359 (400-1½)	
CIRCLING	480-1	459 (500-1)	480-1½ 459 (500-1½)	580-2 559 (600-2)



AK, 22 OCT 2009 to 17 DEC 2009

AK, 22 OCT 2009 to 17 DEC 2009