

NORTON, KANSAS

AL-6818 (FAA)

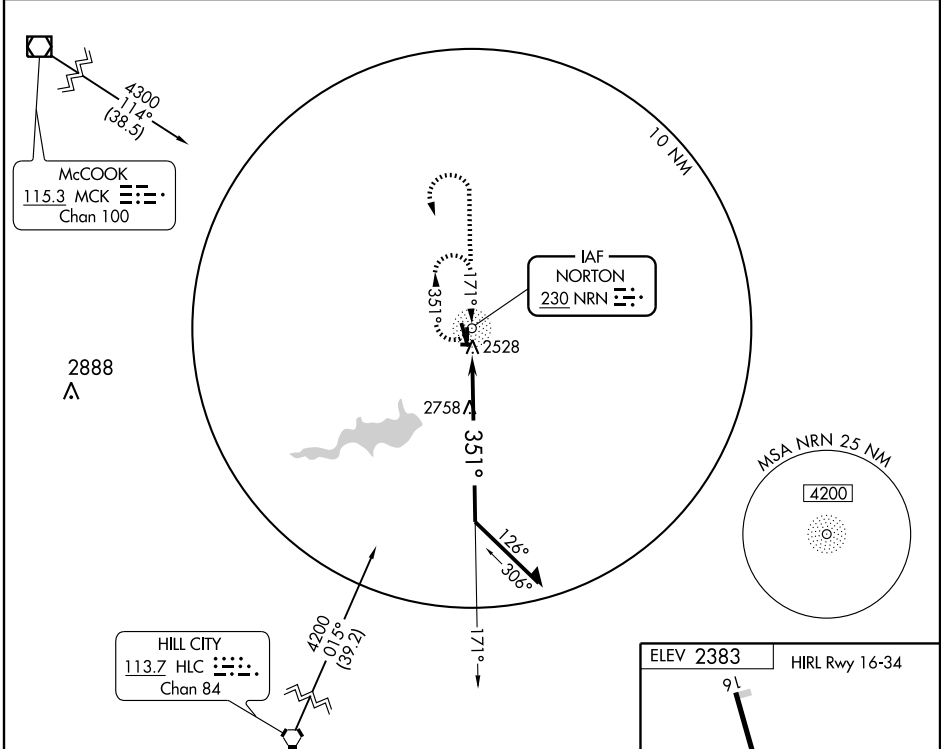
NDB RWY 34

NORTON MUNI (NRN)

NRN NDB 230	APP CRS 351°	Rwy Idg TDZE Apt Elev	4700 2375 2383
-----------------------	------------------------	-----------------------------	---

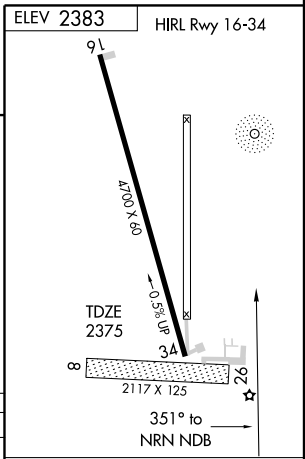
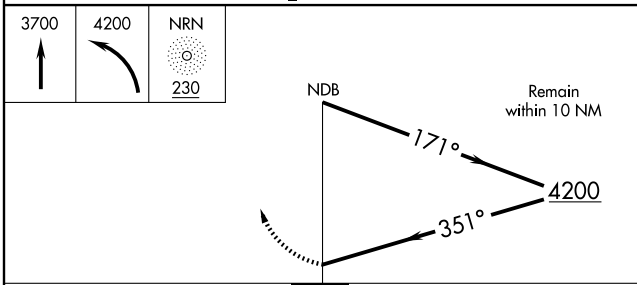
▼ If local altimeter not received, use Hill City altimeter setting and increase all MDAs 100 feet.
▲ NA MISSED APPROACH: Climb to 3700, then climbing left turn to 4200 direct NRN NDB and hold.

AWOS-3 118.275	DENVER CENTER 132.5 379.15	CTAF 122.9
--------------------------	--------------------------------------	----------------------



NC-2, 22 OCT 2009 to 19 NOV 2009

NC-2, 22 OCT 2009 to 19 NOV 2009



CATEGORY	A	B	C	D
S-34	3160-1 785 (800-1)	3160-1¼ 785 (800-1¼)	3160-2¼ 785 (800-2¼)	NA
CIRCLING	3160-1 777 (800-1)	3160-1¼ 777 (800-1¼)	3160-2¼ 777 (800-2¼)	NA

Knots	60	90	120	150	180
Min:Sec					

NORTON, KANSAS
Amdt1 08269

39° 51' N-99° 53' W

NORTON MUNI (NRN)

NDB RWY 34