

RNAV (GPS) RWY 26

WAYNESBORO/ BURKE COUNTY (B X G)

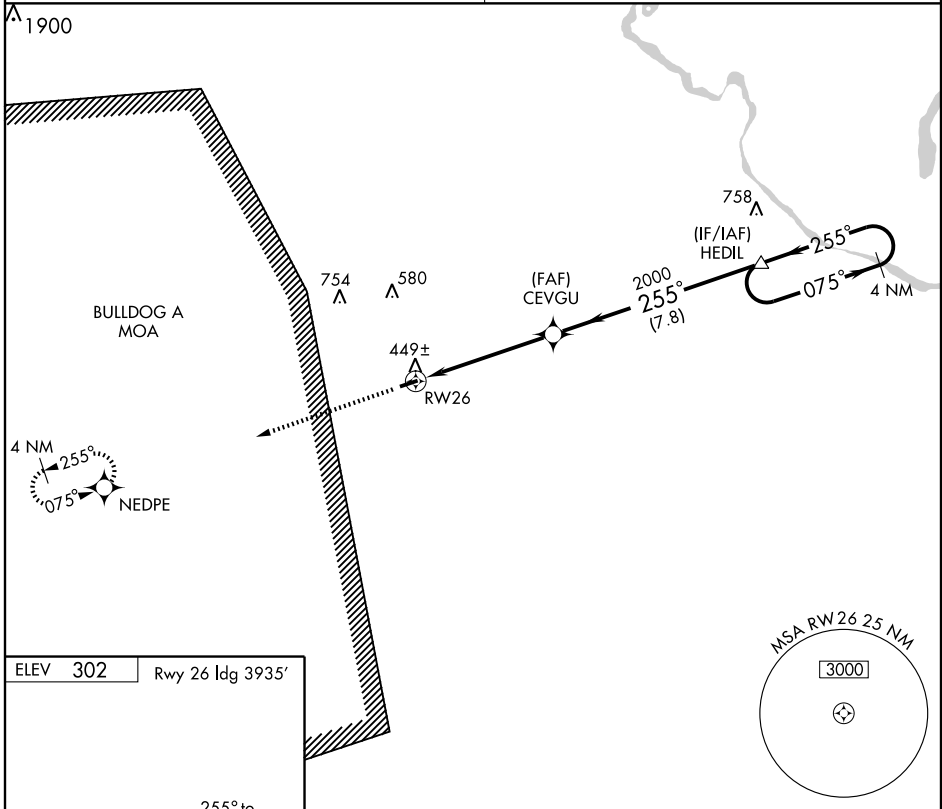
APP CRS 255°	Rwy Idg 3935
	TDZE 302
	Apt Elev 302

▼ Use Augusta Rgnl at Bush Field altimeter setting.
▲ NA GPS or RNP-0.3 Required.
 DME/DME RNP-0.3 NA.

MISSED APPROACH: Climb to 2000 direct NEDPE and hold.

AUGUSTA APP CON ★
126.8 270.3

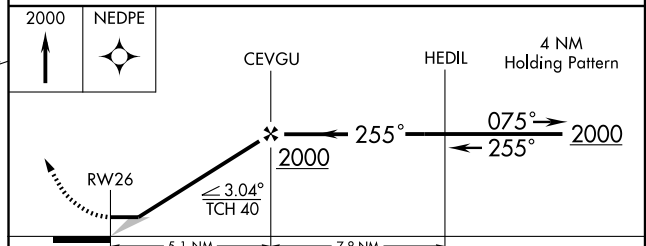
CTAF
122.9 0



SE-4, 22 OCT 2009 to 19 NOV 2009

SE-4, 22 OCT 2009 to 19 NOV 2009

ELEV 302	Rwy 26 Idg 3935'
----------	------------------



CATEGORY	A	B	C	D
LNAV MDA	800-1 498 (500-1)		800-1¼ 498 (500-1¼)	NA
CIRCLING	860-1 558 (600-1)		860-1½ 558 (600-1½)	NA