

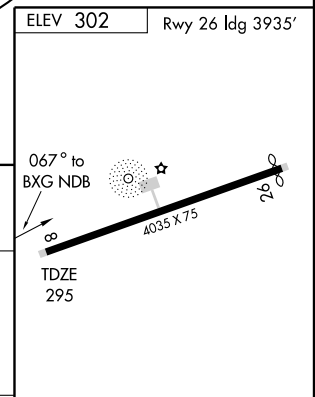
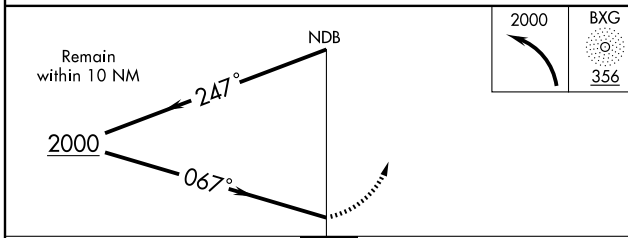
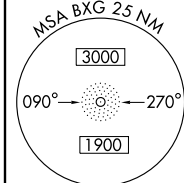
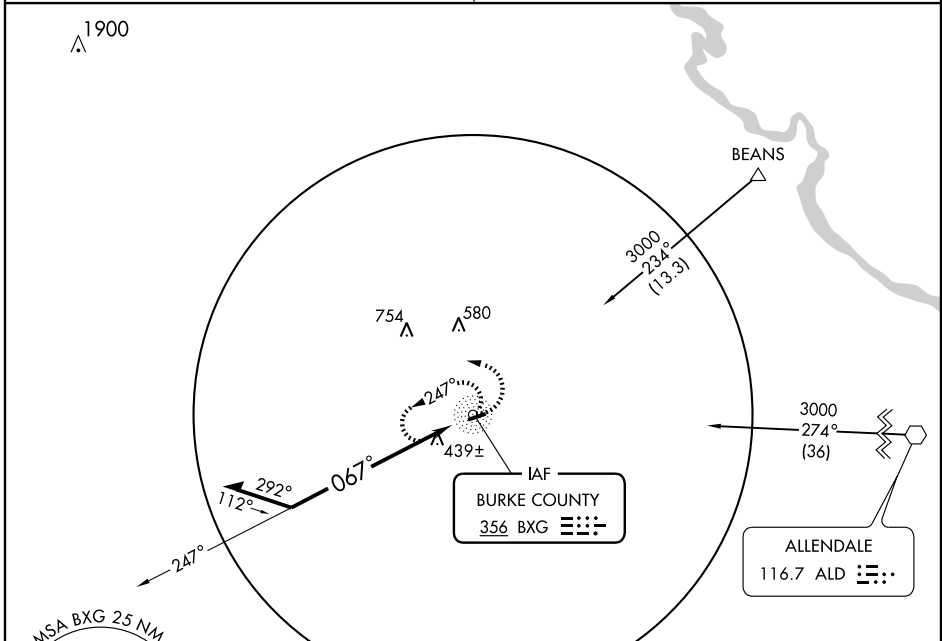
NDB RWY 8

WAYNESBORO/ BURKE COUNTY (B.X.G)

NDB BXG 356	APP CRS 067°	Rwy Idg 4035
		TDZE 295
		Apt Elev 302

<p>▼ ▲ NA</p> <p>Use Augusta Rgnl at Bush Field altimeter setting.</p>	<p>MISSED APPROACH: Climbing left turn to 2000 in BXG NDB holding pattern.</p>
--	--

<p>AUGUSTA APP CON ★ 126.8 270.3</p>	<p>CTAF 122.9 0</p>
---	--------------------------------



CATEGORY	A	B	C	D
S-8	900-1 605 (600-1)		900-1 ³ / ₄ 605 (600-1 ³ / ₄)	NA
CIRCLING	900-1 598 (600-1)		900-1 ³ / ₄ 598 (600-1 ³ / ₄)	NA

MRL Rwy 8-26 0

Knots	60	90	120	150	180
Min:Sec					

SE-4, 22 OCT 2009 to 19 NOV 2009

SE-4, 22 OCT 2009 to 19 NOV 2009