

MONROE, GEORGIA

AL-6813 (FAA)

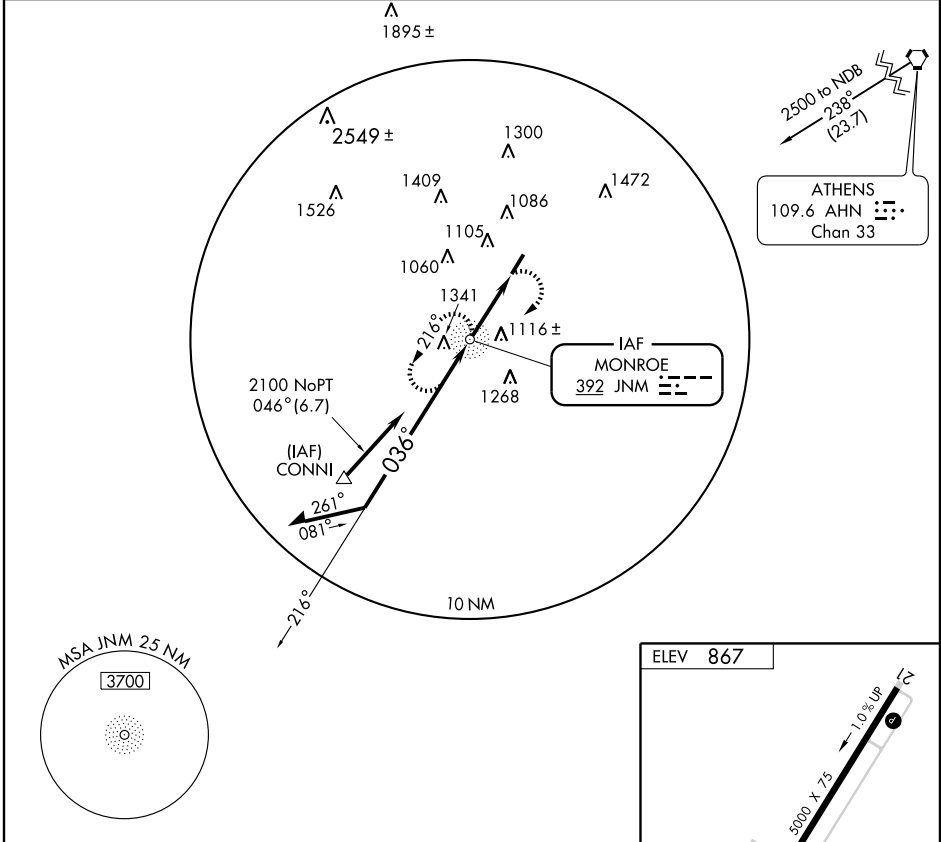
NDB-A

MONROE-WALTON COUNTY (D73)

NDB JNM 392	APP CRS 036°	Rwy Idg TDZE Apt Elev	N/A N/A 867
-----------------------	------------------------	--------------------------	--

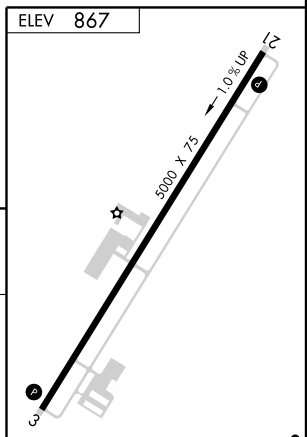
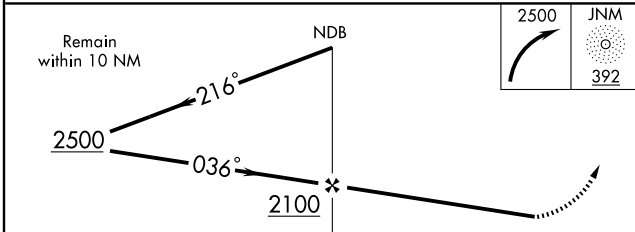
NA If local altimeter setting not received, use Athens altimeter setting and increase all MDA's 60 feet. MISSED APPROACH: Climbing right turn to 2500 direct JNM NDB and hold.

AWOS-A 392	ATLANTA APP CON 126.975 239.275	CTAF 122.9 0
----------------------	---	------------------------



SE-4, 22 OCT 2009 to 19 NOV 2009

SE-4, 22 OCT 2009 to 19 NOV 2009



CATEGORY	A	B	C	D	FAF to MAP 2.8 NM					
CIRCLING	1460-1	593 (600-1)	1460-1½ 593 (600-1½)	NA	Knots	60	90	120	150	180
					Min:Sec	2:48	1:52	1:24	1:07	0:56

MONROE, GEORGIA
Orig 09183

33° 47'N - 83° 42'W

MONROE-WALTON COUNTY (D73)

NDB-A