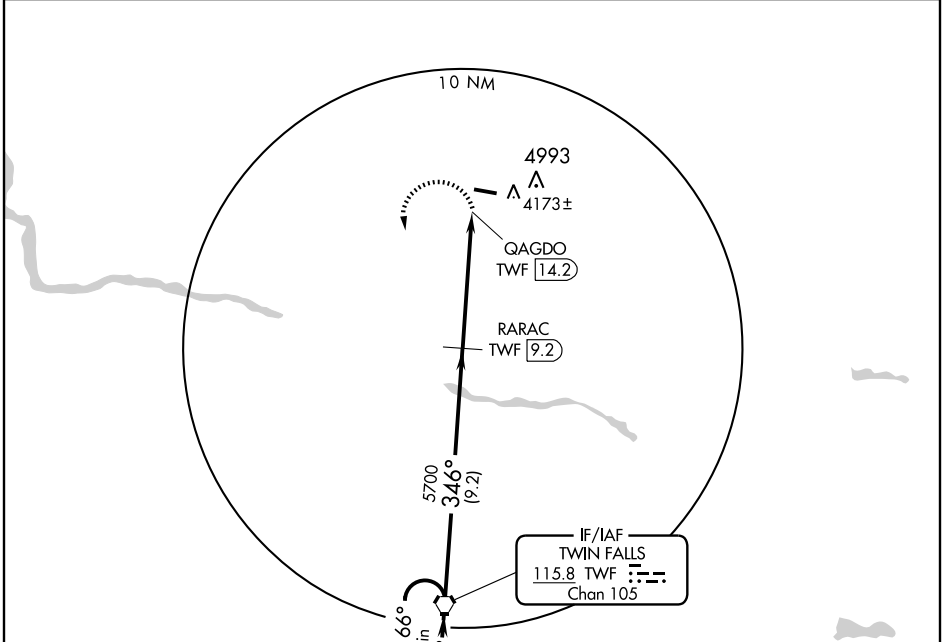


VORTAC TWF 115.8 Chan 105	APP CRS 346°	Rwy Idg TDZE Apt Elev	N/A N/A 4053
---	------------------------	-----------------------------	---

VOR/DME-A
JEROME COUNTY (JER)

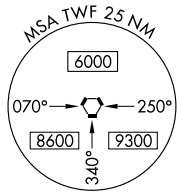
<p>▼ Circling NA north of Rwy 9-27. When local altimeter setting not received, use Twin Falls altimeter setting and increase all MDA 60 feet.</p> <p>▲ MISSED APPROACH: Climbing left turn to 8000 direct TWF VORTAC and hold, continue climb-in-hold to 8000.</p>
--

ASOS 135.225	TWIN FALLS APP CON * 126.7 353.75	SALT LAKE CENTER 118.05 363.0	UNICOM 122.8 (CTAF) 0
------------------------	---	---	---------------------------------

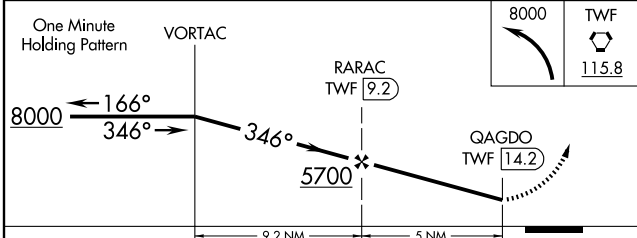
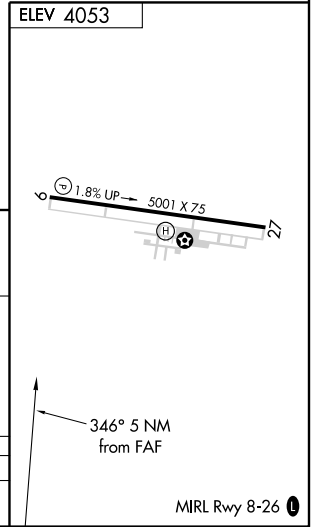


NW-1, 22 OCT 2009 to 19 NOV 2009

NW-1, 22 OCT 2009 to 19 NOV 2009



NoPT for arrival on TWF VORTAC via V142 westbound and V269 southwest bound and V293 northbound.



CATEGORY	A	B	C	D
CIRCLING	4580-1	527 (600-1)	4580-1½ 527 (600-1½)	4620-2 567 (600-2)