

WAAS CH 90514 W27A	APP CRS 266°	Rwy Idg TDZE Apt Elev	5001 4053 4053
--	------------------------	-----------------------------	---

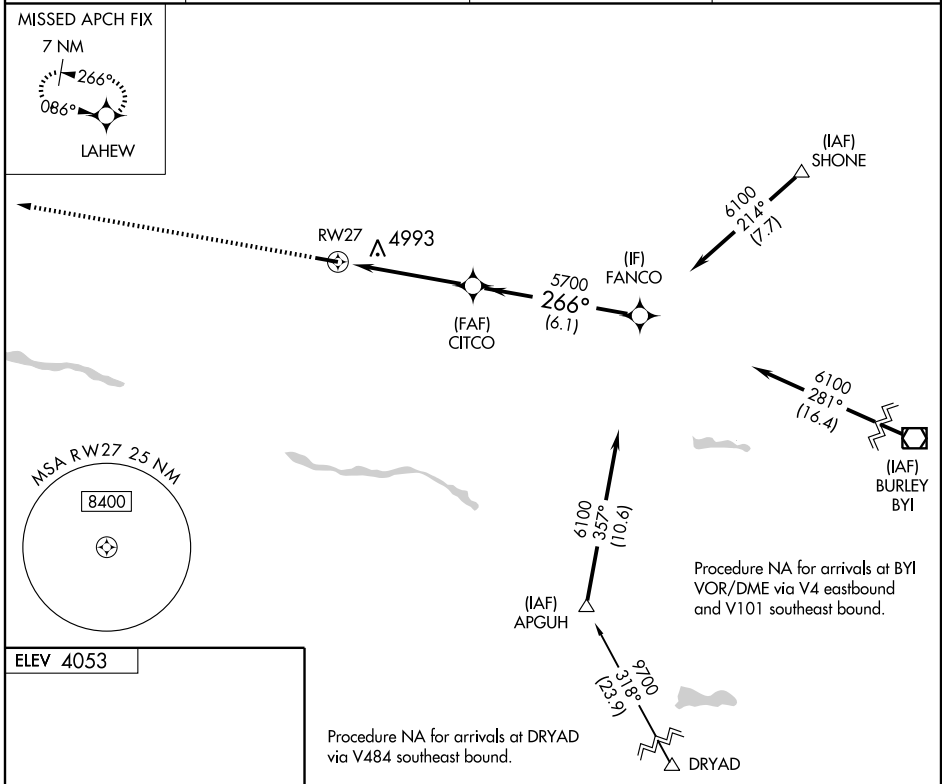
RNAV (GPS) RWY 27

JEROME COUNTY (JER)

⚠ Circling NA north of Rwy 9-27. DME/DME RNP-0.3 NA. Visibility reduction by helicopters NA. When local altimeter setting not received, use Twin Falls altimeter setting and increase all DA 49 feet, and all MDA 60, and increase LPV all Cats. visibility ¼ mile.

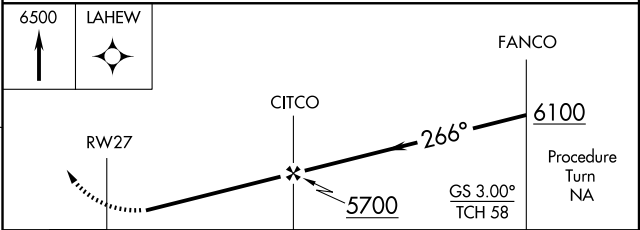
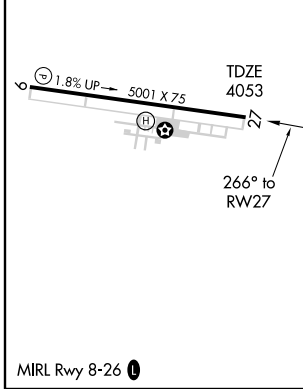
⚠ MISSED APPROACH: Climb to 6500 direct LAHEW and hold.

ASOS 135.225	TWIN FALLS APP CON ★ 126.7 353.75	SALT LAKE CENTER 118.05 363.0	UNICOM 122.8 (CTAF) 0
------------------------	---	---	---------------------------------



NW-1, 22 OCT 2009 to 19 NOV 2009

NW-1, 22 OCT 2009 to 19 NOV 2009



CATEGORY	A	B	C	D
LPV DA	4434-1¼ 381 (400-1¼)			
LNAV MDA	5300-1¼ 1247 (1300-1¼)	5300-1½ 1247 (1300-1½)	5300-3	1247 (1300-3)
CIRCLING	5300-1¼ 1247 (1300-1¼)	5300-1½ 1247 (1300-1½)	5300-3	1247 (1300-3)