

RNAV (GPS) RWY 24

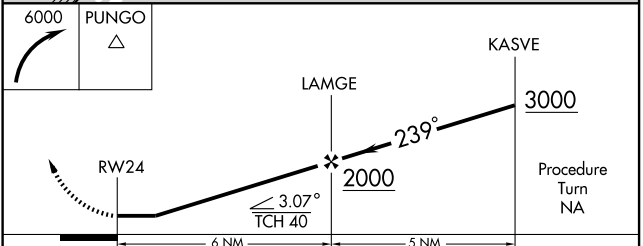
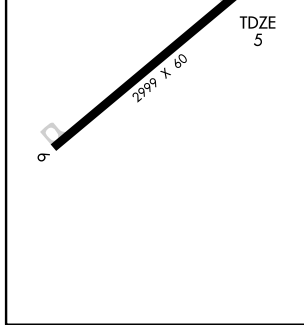
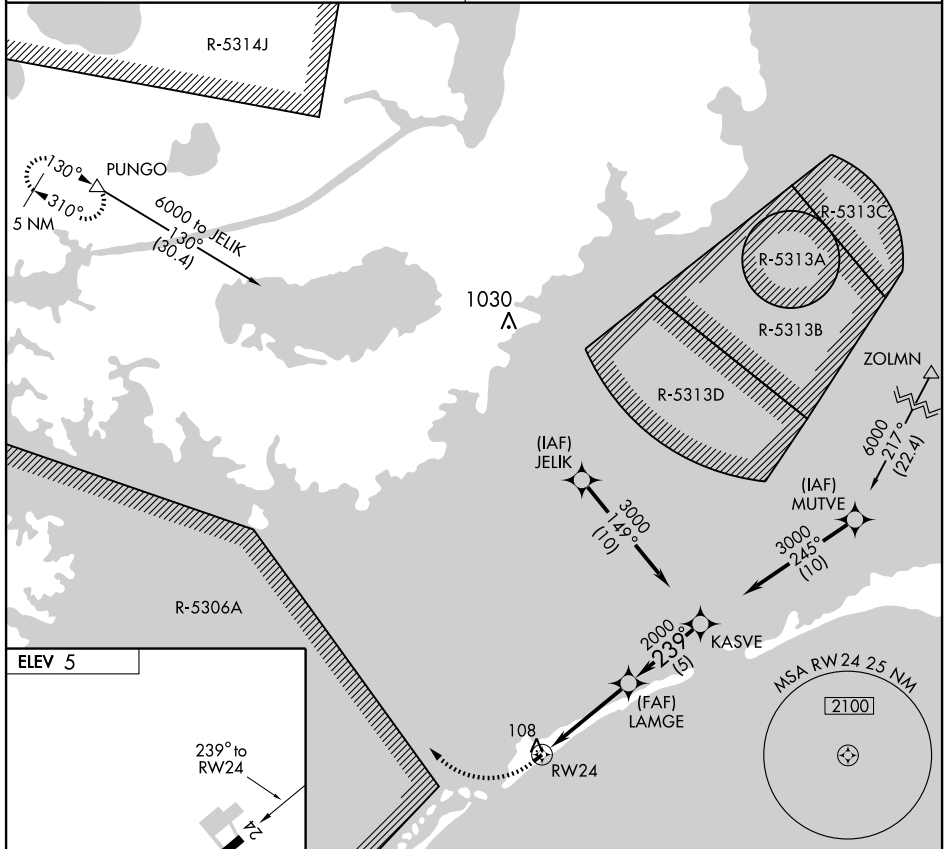
OCRACOKE ISLAND (W95)

APP CRS	Rwy Idg	2999
239°	TDZE	5
	Apt Elev	5

NA Procedure NA at night. Use Hatteras altimeter setting, when not received procedure NA. GPS or RNP-0.3 Required. DME/DME RNP-0.3 NA.

MISSED APPROACH: Climbing right turn to 6000 direct PUNGO WP and hold.

CHERRY POINT APP CON 119.75 360.775	CTAF 122.9
---	----------------------



CATEGORY	A	B	C	D
LNAV MDA	500-1	495 (500-1)		NA
CIRCLING	560-1	555 (600-1)		NA

SE-2, 22 OCT 2009 to 19 NOV 2009

SE-2, 22 OCT 2009 to 19 NOV 2009