

ST MARYS, GEORGIA

AL-6809 (FAA)

RNAV (GPS) RWY 31

ST MARYS (4J6)

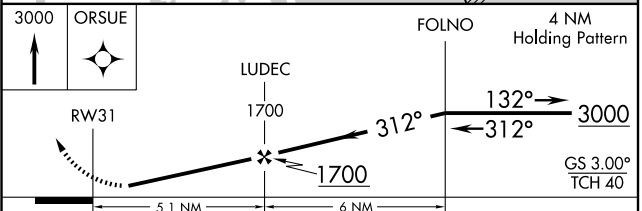
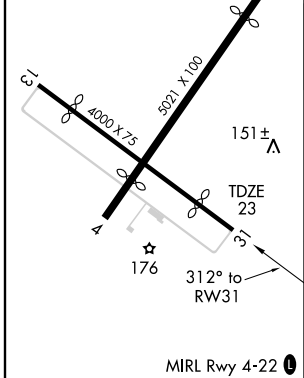
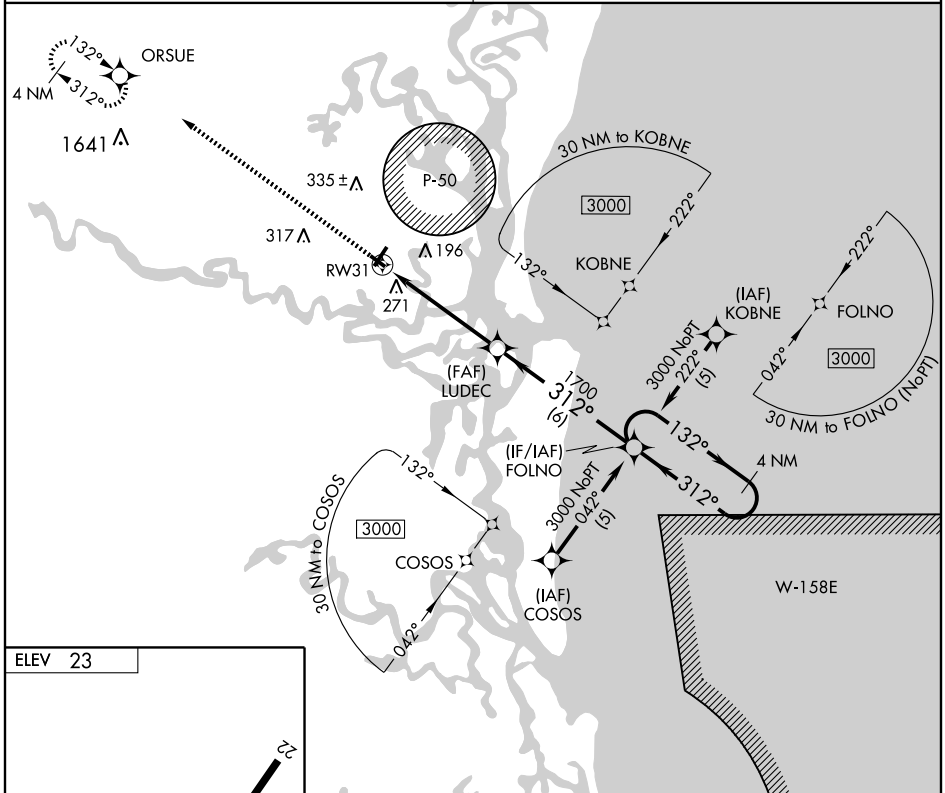
WAAS CH 48914 W31A	APP CRS 312°	Rwy Idg 3300 TDZE 23 Apt Elev 23
--	------------------------	---

NA Circling NA northeast of Rwy 13-31.
DME/DME RNP-0.3 NA. Procedure NA at night.
Visibility reduction by helicopters NA.
Use Jacksonville Intl altimeter setting.

MISSED APPROACH: Climb to 3000 direct ORSUE and hold, continue climb-in-hold to 3000.

JACKSONVILLE APP CON **127.0 322.4**

UNICOM **122.8 (CTAF) 0**



CATEGORY	A	B	C	D
LPV DA	477-1 ³ / ₄ 454 (500-1 ³ / ₄)			
LNAV MDA	580-1	557 (600-1)	580-1 ¹ / ₂ 557 (600-1 ¹ / ₂)	580-1 ³ / ₄ 557 (600-1 ³ / ₄)
CIRCLING	620-1	597 (600-1)	620-1 ¹ / ₂ 597 (600-1 ¹ / ₂)	620-2 597 (600-2)

SE-4, 22 OCT 2009 to 19 NOV 2009

SE-4, 22 OCT 2009 to 19 NOV 2009

ST MARYS, GEORGIA
Amdt 1 09239

30° 45' N - 81° 34' W

RNAV (GPS) RWY 31

ST MARYS (4J6)