

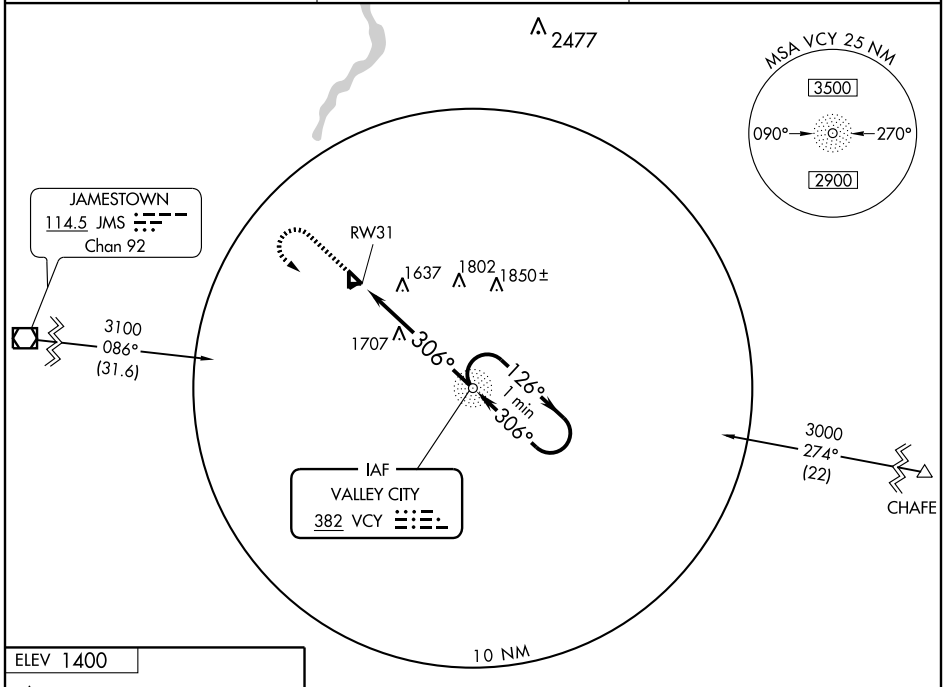
NDB or GPS RWY 31

VALLEY CITY/BARNES COUNTY MUNI (6D8)

NDB VCY 382	APP CRS 306°	Rwy Idg TDZE Apt Elev	4202 1393 1400
-----------------------	------------------------	-----------------------------	---

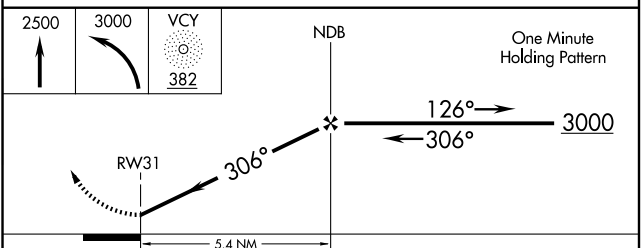
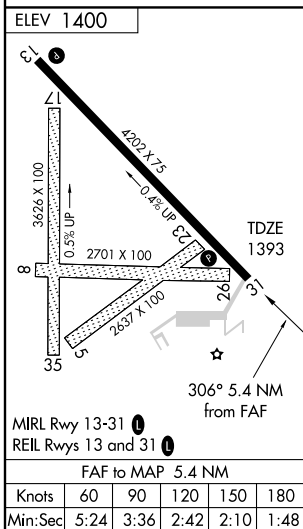
<p>▲ NA Obtain local altimeter setting on CTAF; when not received use Jamestown altimeter setting.</p>	<p>MISSED APPROACH: Climb to 2500 then climbing left turn to 3000 direct VCY NDB and hold.</p>
---	---

<p>AWOS-3 118.225</p>	<p>MINNEAPOLIS CENTER 124.2 270.3</p>	<p>UNICOM 122.8 (CTAF) 0</p>
----------------------------------	--	---



NC-1, 22 OCT 2009 to 19 NOV 2009

NC-1, 22 OCT 2009 to 19 NOV 2009



CATEGORY	A	B	C	D
S-31	2020-1	627 (700-1)	2020-1 ³ / ₄ 627 (700-1 ³ / ₄)	NA
CIRCLING	2020-1	620 (700-1)	2020-1 ³ / ₄ 620 (700-1 ³ / ₄)	NA
JAMESTOWN ALTIMETER SETTING MINIMUMS				
S-31	2120-1	727 (800-1)	2120-2 727 (800-2)	NA
CIRCLING	2120-1	720 (800-1)	2120-2 720 (800-2)	NA