

NDB RWY 30

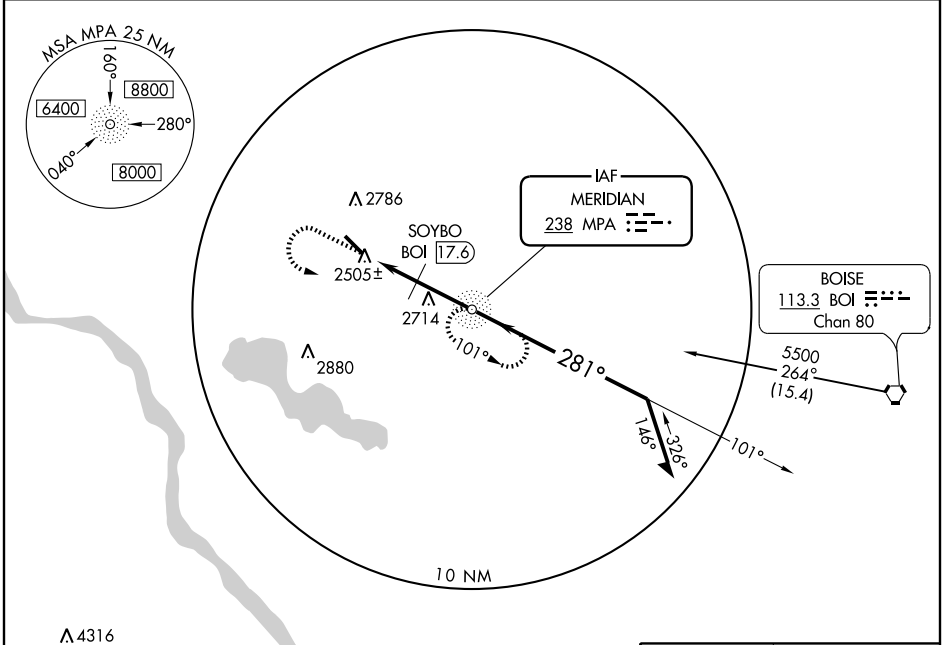
CALDWELL INDUSTRIAL (EUL)

NDB MPA 238	APP CRS 281°	Rwy Idg TDZE Apt Elev	5500 2432 2432
-----------------------	------------------------	-----------------------------	---

When local altimeter setting not received, use Boise altimeter setting and increase all MDA 120 feet and all visibilities 1/2 mile.

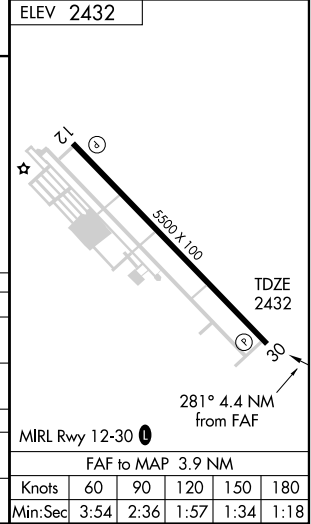
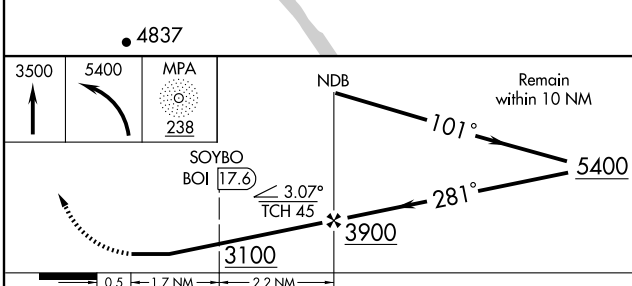
MISSED APPROACH: Climb to 3500 then climbing left turn to 5400 direct MPA NDB and hold, continue climb-in-hold to 5400.

AWOS-3 135.075	BOISE APP CON 119.6 269.4	UNICOM 122.7 (CTAF)
--------------------------	-------------------------------------	-------------------------------



NW-1, 22 OCT 2009 to 19 NOV 2009

NW-1, 22 OCT 2009 to 19 NOV 2009



CATEGORY	A	B	C	D
S-30	3100-1	668 (700-1)	3100-1¾ 668 (700-1¾)	3100-2 668 (700-2)
CIRCLING	3100-1	668 (700-1)	3100-1¾ 668 (700-1¾)	3100-2 668 (700-2)
DME MINIMUMS				
S-30	2940-1	508 (600-1)	2940-1½	508 (600-1½)
CIRCLING	3100-1	668 (700-1)	3100-1¾ 668 (700-1¾)	3100-2 668 (700-2)