

# RNAV (GPS) RWY 36

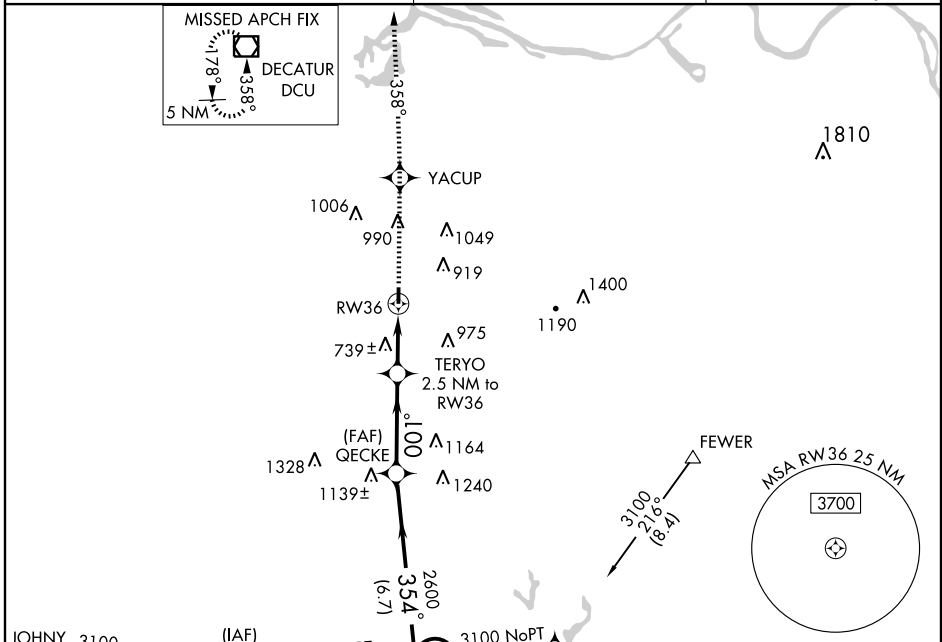
HARTSELLE-MORGAN COUNTY RGNL (5M0)

APP CRS	Rwy Idg	<b>3599</b>
<b>001°</b>	TDZE	<b>599</b>
	Apt Elev	<b>628</b>

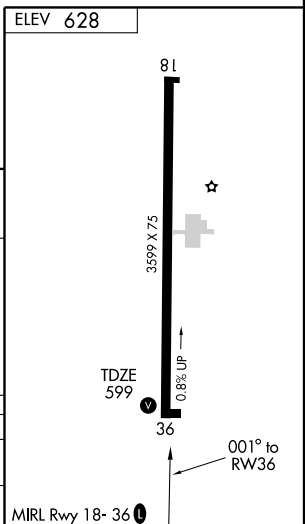
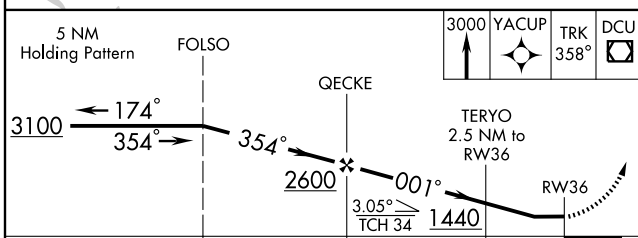
Use Huntsville Intl-Carl T. Jones Field altimeter setting; if not received, use Cullman altimeter setting and increase all MDAs 40 feet. When VGSi Inop, procedure NA at night. DME/DME RNP-0.3 NA. Visibility reduction by Helicopters NA.

MISSED APPROACH: Climb to 3000 direct YACUP and via 358° track to DCU VOR/DME and hold.

HUNTSVILLE INTL - CARL T. JONES FIELD ATIS <b>121.25</b>	HUNTSVILLE APP CON ★ <b>118.05 239.0</b>	UNICOM <b>122.8 (CTAF)</b>
---	---	-------------------------------



NoPT for arrival at FOLSO on V49 northbound.



CATEGORY	A	B	C	D
LNAV MDA	1040-1	441 (500-1)	1040-1¼ 441 (500-1¼)	NA
CIRCLING	1140-1 512 (600-1)	1160-1 532 (600-1)	1180-1½ 552 (600-1½)	NA

# RNAV (GPS) RWY 36

SE-4, 22 OCT 2009 to 19 NOV 2009

SE-4, 22 OCT 2009 to 19 NOV 2009